

# SERPING1 Antibody



PACO49998

---

## Product Information

**Size:**

50ug

**Reactivity:**

Human, Rat

**Source:**

Rabbit

**Isotype:**

IgG

**Applications:**

ELISA, WB, IHC, IF

**Recommended dilutions:**

ELISA:1:2000-1:10000, WB:1:200-1:5000,  
IHC:1:20-1:200, IF:1:50-1:200

**Protein Background:**

Activation of the C1 complex is under control of the C1-inhibitor. It forms a proteolytically inactive stoichiometric complex with the C1r or C1s proteases. May play a potentially crucial role in regulating important physiological pathways including complement activation, blood coagulation, fibrinolysis and the generation of kinins. Very efficient inhibitor of FXIIa. Inhibits chymotrypsin and kallikrein.

**Gene ID:**

SERPING1

**Uniprot**

P05155

**Synonyms:**

Plasma protease C1 inhibitor (C1 Inh) (C1Inh) (C1 esterase inhibitor) (C1-inhibiting factor) (Serpins G1), SERPING1, C1IN C1NH

**Immunogen:**

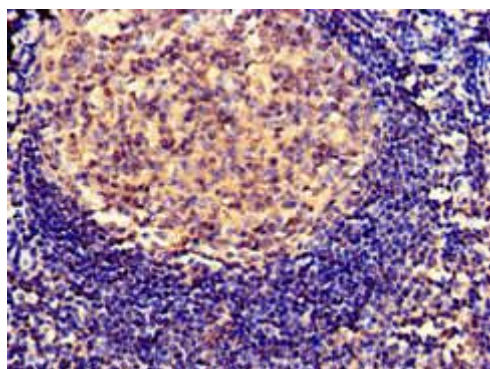
Recombinant Human Plasma protease C1 inhibitor protein (23-300AA).

**Storage:**

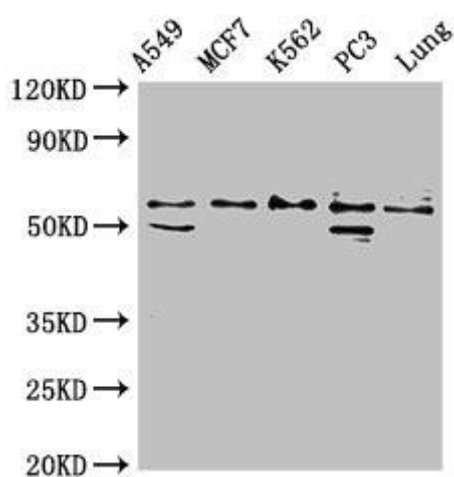
Preservative: 0.03% Proclin 300. Constituents: 50% Glycerol, 0.01M PBS, pH 7.4

## Product Images

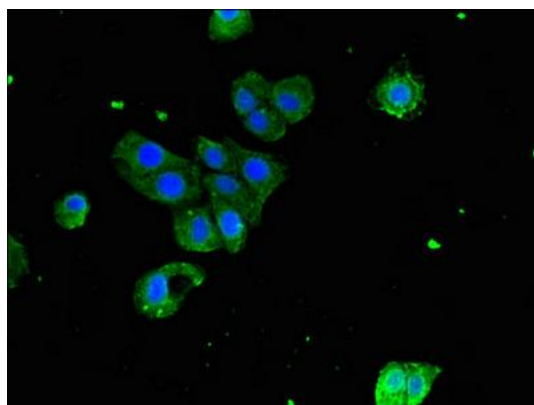
---



Immunohistochemistry of paraffin-embedded human tonsil tissue using PACO49998 at dilution of 1:100.



Western Blot. Positive WB detected in: A549 whole cell lysate, MCF-7 whole cell lysate, K562 whole cell lysate, PC-3 whole cell lysate, Rat lung tissue. All lanes: SERPING1 antibody at 2 $\mu$ g/ml. Secondary. Goat polyclonal to rabbit IgG at 1/50000 dilution. Predicted band size: 56, 50 kDa. Observed band size: 56 kDa.



Immunofluorescent analysis of HepG2 cells using PACO49998 at dilution of 1:100 and Alexa Fluor 488-conjugated AffiniPure Goat Anti-Rabbit IgG(H+L).