

SLC10A3 Antibody



PACO50006

Product Information

Size:

50ug

Reactivity:

Human, Rat

Source:

Rabbit

Isotype:

IgG

Applications:

ELISA, WB, IHC

Recommended dilutions:

ELISA:1:2000-1:10000, WB:1:500-1:5000,
IHC:1:20-1:200

Protein Background:

The ubiquitous expression and the conservation of the sequence in distant animal species suggest that the gene codes for a protein with housekeeping functions.

Gene ID:

SLC10A3

Uniprot

P09131

Synonyms:

P3 protein (Solute carrier family 10 member 3), SLC10A3, DXS253E P3

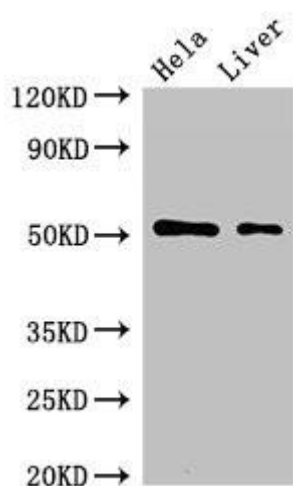
Immunogen:

Recombinant Human P3 protein (7-151AA).

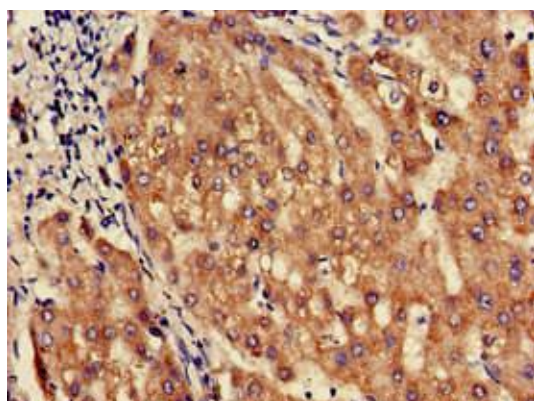
Storage:

Preservative: 0.03% Proclin 300. Constituents: 50% Glycerol, 0.01M PBS, pH 7.4

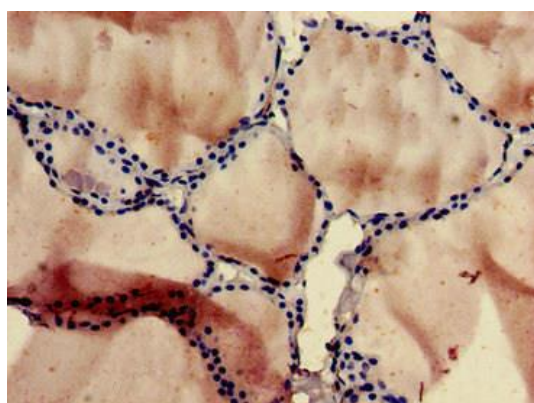
Product Images



Western Blot. Positive WB detected in: HeLa whole cell lysate, Rat liver tissue. All lanes: SLC10A3 antibody at 2 μ g/ml. Secondary. Goat polyclonal to rabbit IgG at 1/50000 dilution. Predicted band size: 51, 48 kDa. Observed band size: 51 kDa.



Immunohistochemistry of paraffin-embedded human liver tissue using PACO50006 at dilution of 1:100.



Immunohistochemistry of paraffin-embedded human thyroid tissue using PACO50006 at dilution of 1:100.