

SLC16A7 Antibody



PACO50014

Product Information

Size:

50ug

Reactivity:

Human, Rat

Source:

Rabbit

Isotype:

IgG

Applications:

ELISA, WB, IHC, IF

Recommended dilutions:

ELISA:1:2000-1:10000, WB:1:500-1:5000,
IHC:1:20-1:200, IF:1:50-1:200

Protein Background:

Proton-coupled monocarboxylate transporter. Catalyzes the rapid transport across the plasma membrane of many monocarboxylates such as lactate, pyruvate, branched-chain oxo acid, derived from leucine, valine and isoleucine, and the ketone bodies acetoacetate, beta-hydroxybutyrate and acetate. Functions as high-affinity pyruvate transporter.

Gene ID:

SLC16A7

Uniprot

O60669

Synonyms:

Monocarboxylate transporter 2 (MCT 2) (Solute carrier family 16 member 7), SLC16A7, MCT2

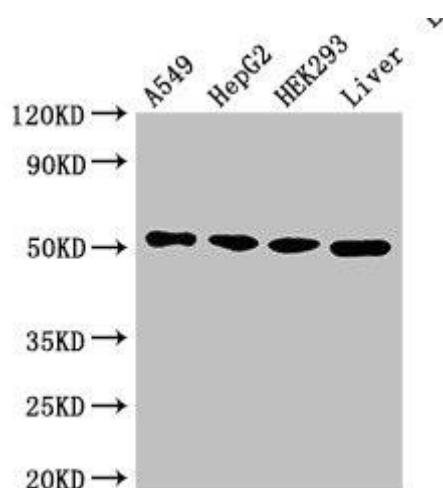
Immunogen:

Recombinant Human Monocarboxylate transporter 2 protein (197-279AA).

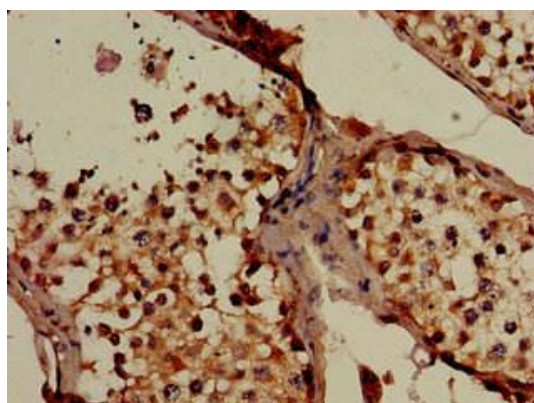
Storage:

Preservative: 0.03% Proclin 300. Constituents: 50% Glycerol, 0.01M PBS, pH 7.4

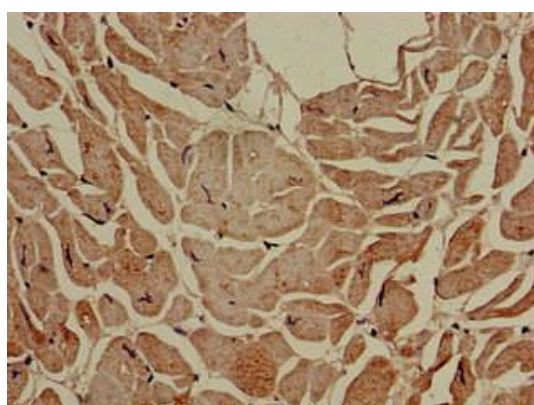
Product Images



Western Blot. Positive WB detected in: A549 whole cell lysate, HepG2 whole cell lysate, HEK293 whole cell lysate, Rat liver tissue. All lanes: SLC16A7 antibody at 2.5 μ g/ml. Secondary. Goat polyclonal to rabbit IgG at 1/50000 dilution. Predicted band size: 53 kDa. Observed band size: 53 kDa.



Immunohistochemistry of paraffin-embedded human testis tissue using PACO50014 at dilution of 1:100.



Immunohistochemistry of paraffin-embedded human heart tissue using PACO50014 at dilution of 1:100.