

SLC18A2 Antibody



PACO50018

Product Information

Size:

50ug

Reactivity:

Human, Mouse

Source:

Rabbit

Isotype:

IgG

Applications:

ELISA, WB, IF

Recommended dilutions:

ELISA:1:2000-1:10000, WB:1:500-1:5000,
IF:1:50-1:200

Protein Background:

Involved in the ATP-dependent vesicular transport of biogenic amine neurotransmitters. Pumps cytosolic monoamines including dopamine, norepinephrine, serotonin, and histamine into synaptic vesicles. Requisite for vesicular amine storage prior to secretion via exocytosis.

Gene ID:

SLC18A2

Uniprot

Q05940

Synonyms:

Synaptic vesicular amine transporter (Monoamine transporter) (Solute carrier family 18 member 2) (Vesicular amine transporter 2) (VAT2), SLC18A2, SVMT VMAT2

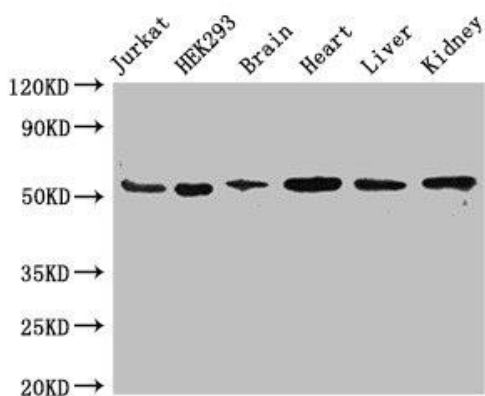
Immunogen:

Recombinant Human Synaptic vesicular amine transporter protein (463-514AA).

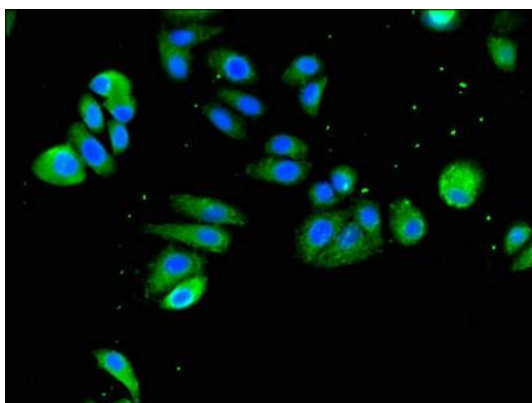
Storage:

Preservative: 0.03% Proclin 300. Constituents: 50% Glycerol, 0.01M PBS, pH 7.4

Product Images



Western Blot. Positive WB detected in: Jurkat whole cell lysate, HEK293 whole cell lysate, Mouse brain tissue, Mouse heart tissue, Mouse liver tissue, Mouse kidney tissue. All lanes: SLC18A2 antibody at 3.4 μ g/ml. Secondary. Goat polyclonal to rabbit IgG at 1/50000 dilution. Predicted band size: 56, 23 kDa. Observed band size: 56 kDa.



Immunofluorescent analysis of HepG2 cells using PACO50018 at dilution of 1:100 and Alexa Fluor 488-conjugated AffiniPure Goat Anti-Rabbit IgG(H+L).