

PACO50102

---

## Product Information

**Size:**

50ug

**Reactivity:**

Human

**Source:**

Rabbit

**Isotype:**

IgG

**Applications:**

ELISA, WB, IHC, IP

**Recommended dilutions:**

ELISA:1:2000-1:10000, WB:1:500-1:5000,  
IHC:1:20-1:200, IP:1:200-1:2000

**Protein Background:****Gene ID:**

XRCC5

**Uniprot**

P13010

**Synonyms:**

X-ray repair cross-complementing protein 5 (EC 3.6.4) (86 kDa subunit of Ku antigen) (ATP-dependent DNA helicase 2 subunit 2) (ATP-dependent DNA helicase II 80 kDa subunit) (CTC box-binding factor 85 kDa subunit) (CTC85) (CTCBF) (DNA repair protein XRCC5) (Ku80) (Ku86) (Lupus Ku autoantigen protein p86) (Nuclear factor IV) (Thyroid-lupus autoantigen) (TLAA) (X-ray repair complementing defective repair in Chinese hamster cells 5 (double-strand-break rejoining)), XRCC5, G22P2

**Immunogen:**

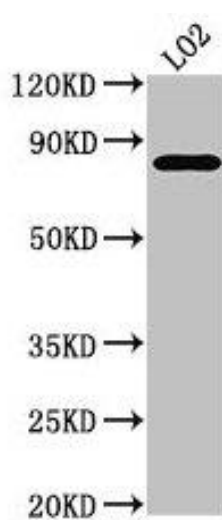
Recombinant Human X-ray repair cross-complementing protein 5 protein (251-455AA).

**Storage:**

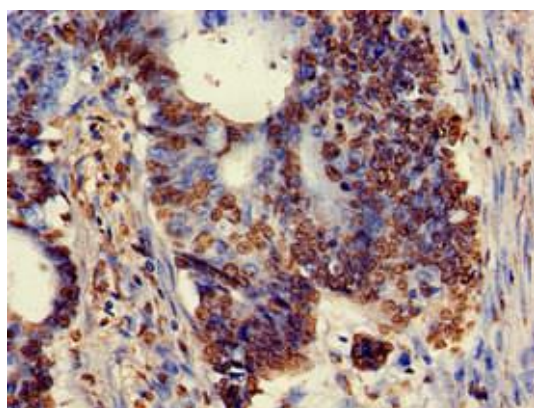
Preservative: 0.03% Proclin 300. Constituents: 50% Glycerol, 0.01M PBS, pH 7.4

## Product Images

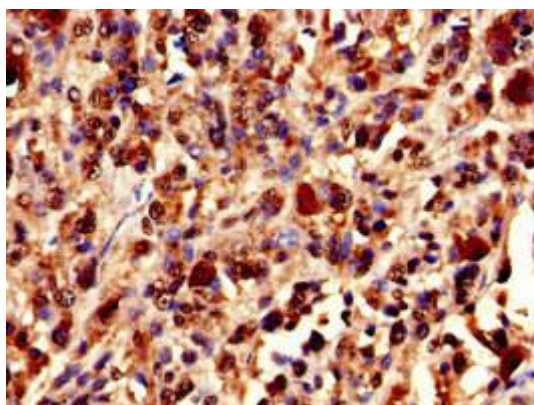
---



Western Blot. Positive WB detected in: LO2 whole cell lysate. All lanes: XRCC5 antibody at 3.5 $\mu$ g/ml. Secondary. Goat polyclonal to rabbit IgG at 1/50000 dilution. Predicted band size: 83 kDa. Observed band size: 83 kDa.



Immunohistochemistry of paraffin-embedded human colon cancer using PACO50102 at dilution of 1:100.



Immunohistochemistry of paraffin-embedded human melanoma using PACO50102 at dilution of 1:100.