

Product Information

Size:

50ug

Reactivity:

Human

Source:

Rabbit

Isotype:

IgG

Applications:

ELISA, IHC

Recommended dilutions:

ELISA:1:2000-1:10000, IHC:1:20-1:200

Protein Background:

Chemotactic factor that attracts monocytes, lymphocytes, basophils and eosinophils, but not neutrophils. Signals through CCR2B and CCR3 receptors. Plays a role in the accumulation of leukocytes at both sides of allergic and non-allergic inflammation. May be involved in the recruitment of monocytes into the arterial wall during the disease process of atherosclerosis. May play a role in the monocyte attraction in tissues chronically exposed to exogenous pathogens.

Gene ID:

CCL13

Uniprot

Q99616

Synonyms:

C-C motif chemokine 13 (CK-beta-10) (Monocyte chemoattractant protein 4) (Monocyte chemotactic protein 4) (MCP-4) (NCC-1) (Small-inducible cytokine A13) [Cleaved into: C-C motif chemokine 13, long chain; C-C motif chemokine 13, medium chain; C-C motif chemokine 13, short chain], CCL13, MCP4 NCC1 SCYA13

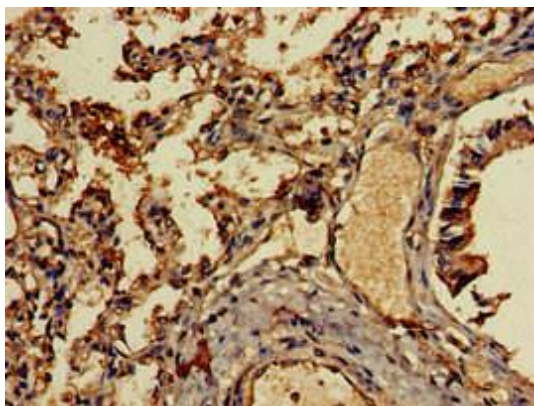
Immunogen:

Recombinant Human C-C motif chemokine 13 protein (17-81AA).

Storage:

Preservative: 0.03% Proclin 300. Constituents: 50% Glycerol, 0.01M PBS, pH 7.4

Product Images



Immunohistochemistry of paraffin-embedded human lung tissue using PACO50134 at dilution of 1:100.