
Product Information

Size:

50ug

Reactivity:

Human

Source:

Rabbit

Isotype:

IgG

Applications:

ELISA, IF

Recommended dilutions:

ELISA:1:2000-1:10000, IF:1:50-1:200

Protein Background:**Gene ID:**

PIK3CG

Uniprot

P48736

Synonyms:

Phosphatidylinositol 4,5-bisphosphate 3-kinase catalytic subunit gamma isoform (PI3-kinase subunit gamma) (PI3K-gamma) (PI3Kgamma) (PtdIns-3-kinase subunit gamma) (EC 2.7.1.153) (Phosphatidylinositol 4,5-bisphosphate 3-kinase 110 kDa catalytic subunit gamma) (PtdIns-3-kinase subunit p110-gamma) (p110gamma) (Phosphoinositide-3-kinase catalytic gamma polypeptide) (Serine/threonine protein kinase PIK3CG) (EC 2.7.11.1) (p120-PI3K), PIK3CG

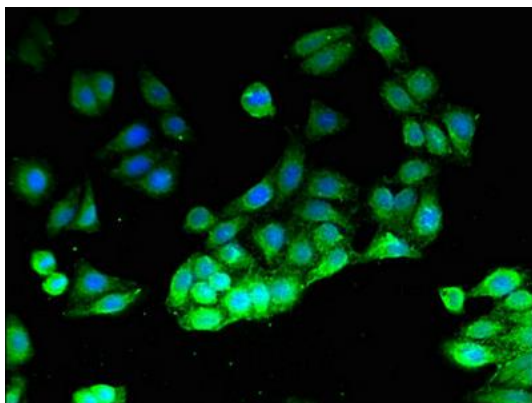
Immunogen:

Recombinant Human Phosphatidylinositol 4,5-bisphosphate 3-kinase catalytic subunit γ isoform protein (438-588AA).

Storage:

Preservative: 0.03% Proclin 300. Constituents: 50% Glycerol, 0.01M PBS, pH 7.4

Product Images



Immunofluorescent analysis of HepG2 cells using PACO50166 at dilution of 1:100 and Alexa Fluor 488-conjugated AffiniPure Goat Anti-Rabbit IgG(H+L).