

# KAT8 Antibody



PACO50190

---

## Product Information

**Size:**

50ug

**Reactivity:**

Human, Mouse, Rat

**Source:**

Rabbit

**Isotype:**

IgG

**Applications:**

ELISA, WB

**Recommended dilutions:**

ELISA:1:2000-1:10000, WB:1:500-1:5000

**Protein Background:**

Histone acetyltransferase which may be involved in transcriptional activation. May influence the function of ATM. As part of the MSL complex it is involved in acetylation of nucleosomal histone H4 producing specifically H4K16ac. As part of the NSL complex it may be involved in acetylation of nucleosomal histone H4 on several lysine residues. That activity is less specific than the one of the MSL complex. Can also acetylate TP53/p53 at 'Lys-120'.

**Gene ID:**

KAT8

**Uniprot**

Q9H7Z6

**Synonyms:**

Histone acetyltransferase KAT8 (EC 2.3.1.48) (Lysine acetyltransferase 8) (MOZ, YBF2/SAS3, SAS2 and TIP60 protein 1) (MYST-1) (hMOF), KAT8, MOF MYST1

**Immunogen:**

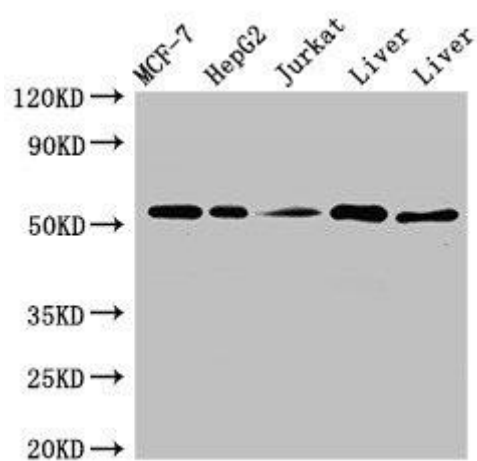
Recombinant Human Histone acetyltransferase KAT8 protein (1-168AA).

**Storage:**

Preservative: 0.03% Proclin 300. Constituents: 50% Glycerol, 0.01M PBS, pH 7.4

## Product Images

---



Western Blot. Positive WB detected in: MCF-7 whole cell lysate, HepG2 whole cell lysate, Jurkat whole cell lysate, Mouse liver tissue, Rat liver tissue. All lanes: KAT8 antibody at 3 $\mu$ g/ml. Secondary. Goat polyclonal to rabbit IgG at 1/50000 dilution. Predicted band size: 53, 54 kDa. Observed band size: 53 kDa.