

BETV4 Antibody



PACO50214

Product Information

Size:

50ug

Reactivity:

Betula pendula

Source:

Rabbit

Isotype:

IgG

Applications:

ELISA, WB

Recommended dilutions:

ELISA:1:2000-1:10000, WB:1:500-1:5000

Protein Background:

Gene ID:

BETV4

Uniprot

Q39419

Synonyms:

Polcalcin Bet v 4 (Calcium-binding pollen allergen Bet v 4) (allergen Bet v 4), BETV4

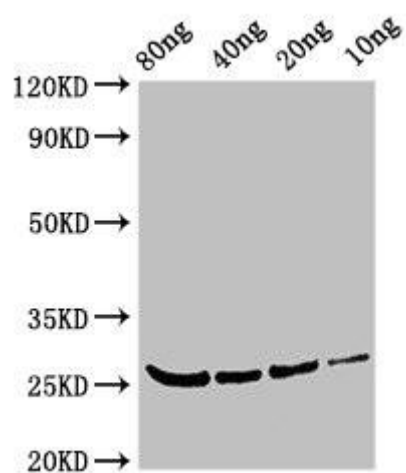
Immunogen:

Recombinant Betula pendula Polcalcin Bet v 4 protein (1-85AA).

Storage:

Preservative: 0.03% Proclin 300. Constituents: 50% Glycerol, 0.01M PBS, pH 7.4

Product Images



Western Blot. Positive WB detected in Recombinant protein. All lanes: BETV4 antibody at 3 μ g/ml. Secondary. Goat polyclonal to rabbit IgG at 1/50000 dilution. predicted band size: 26 kDa. observed band size: 26 kDa.