

## Product Information

**Size:**

50ug

**Reactivity:**

Olea europaea

**Source:**

Rabbit

**Isotype:**

IgG

**Applications:**

ELISA, WB

**Recommended dilutions:**

ELISA:1:2000-1:10000, WB:1:500-1:5000

**Protein Background:**

glucan endo-1,3-beta-D-glucosidase activity, protein homodimerization activity, (1->3)-beta-D-glucan catabolic process.

**Gene ID:**

OLE9

**Uniprot**

Q94G86

**Synonyms:**

Glucan endo-1,3-beta-D-glucosidase (EC 3.2.1.39) (Major pollen allergen Ole e 9) (allergen Ole e 9), OLE9

**Immunogen:**

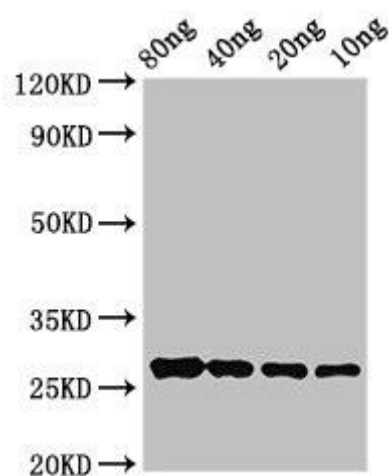
Recombinant Olea europaea Glucan endo-1,3-beta-D-glucosidase protein (360-460AA).

**Storage:**

Preservative: 0.03% Proclin 300. Constituents: 50% Glycerol, 0.01M PBS, pH 7.4

## Product Images

---



Western Blot. Positive WB detected in Recombinant protein. All lanes: OLE9 antibody at 2.8 $\mu$ g/ml. Secondary. Goat polyclonal to rabbit IgG at 1/50000 dilution. predicted band size: 27 kDa. observed band size: 27 kDa.