

# PRSS56 Antibody



PACO50266

---

## Product Information

**Size:**

50ug

**Reactivity:**

Human, Rat

**Source:**

Rabbit

**Isotype:**

IgG

**Applications:**

ELISA, WB, IHC

**Recommended dilutions:**

ELISA:1:2000-1:10000, WB:1:500-1:5000,  
IHC:1:20-1:200

**Protein Background:**

Serine protease required during eye development.

**Gene ID:**

PRSS56

**Uniprot**

P0CW18

**Synonyms:**

Serine protease 56 (EC 3.4.21), PRSS56

**Immunogen:**

Recombinant Human Serine protease 56 protein (36-116AA).

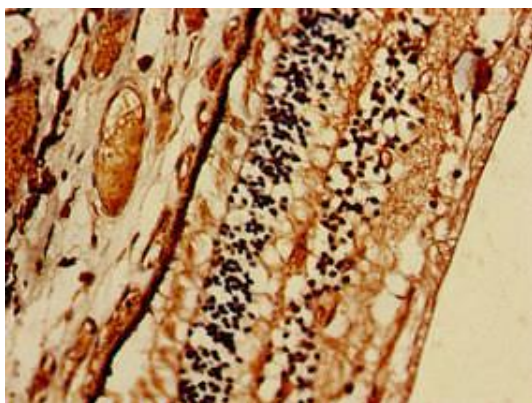
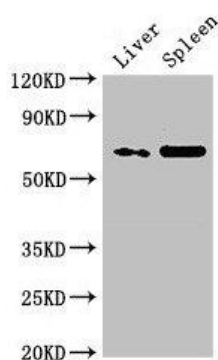
**Storage:**

Preservative: 0.03% Proclin 300. Constituents: 50% Glycerol, 0.01M PBS, pH 7.4

## Product Images

---

Western Blot. Positive WB detected in: Rat liver tissue, Rat spleen tissue. All lanes: PRSS56 antibody at 3 $\mu$ g/ml. Secondary. Goat polyclonal to rabbit IgG at 1/50000 dilution. Predicted band size: 65 kDa. Observed band size: 65 kDa.



Immunohistochemistry of paraffin-embedded human eye tissue using PACO50266 at dilution of 1:100.