

BETVIA Antibody



PACO50286

Product Information

Size:

50ug

Reactivity:

Betula pendula

Source:

Rabbit

Isotype:

IgG

Applications:

ELISA, WB

Recommended dilutions:

ELISA:1:2000-1:10000, WB:1:500-1:5000

Protein Background:

May be a general steroid carrier protein.

Gene ID:

BETVIA

Uniprot

P15494

Synonyms:

Major pollen allergen Bet v 1-A (Allergen Bet v I-A) (allergen Bet v 1-A), BETVIA, BETVI

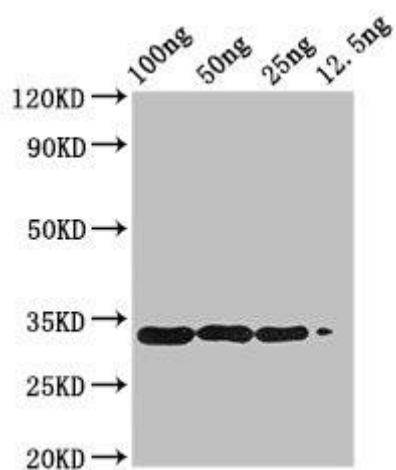
Immunogen:

Recombinant Betula pendula Major pollen allergen Bet v 1-A protein (2-160AA).

Storage:

Preservative: 0.03% Proclin 300. Constituents: 50% Glycerol, 0.01M PBS, pH 7.4

Product Images



Western Blot. Positive WB detected in Recombinant protein. All lanes: BETVIA antibody at 2.8 μ g/ml. Secondary. Goat polyclonal to rabbit IgG at 1/50000 dilution. Predicted band size: 34 kDa. Observed band size: 34 kDa.