

PPX1 Antibody



PACO50310

Product Information

Size:

50ug

Reactivity:

Saccharomyces cerevisiae

Source:

Rabbit

Isotype:

IgG

Applications:

ELISA, WB

Recommended dilutions:

ELISA:1:2000-1:10000, WB:1:500-1:5000

Protein Background:

Degradation of inorganic polyphosphates.

Gene ID:

PPX1

Uniprot

P38698

Synonyms:

Exopolyphosphatase (ExopolyPase) (EC 3.6.1.11) (Metaphosphatase), PPX1

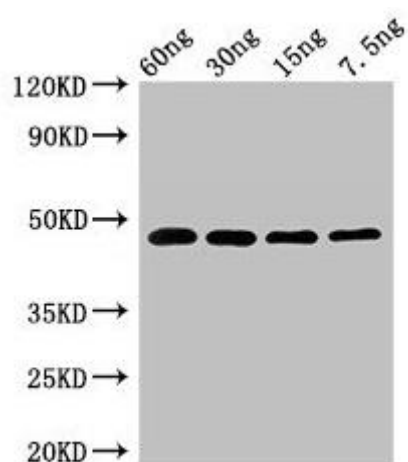
Immunogen:

Recombinant Saccharomyces cerevisiae Exopolyphosphatase protein (1-397AA).

Storage:

Preservative: 0.03% Proclin 300. Constituents: 50% Glycerol, 0.01M PBS, pH 7.4

Product Images



Western Blot. Positive WB detected in Recombinant protein. All lanes: PPX1 antibody at 2.7 μ g/ml. Secondary. Goat polyclonal to rabbit IgG at 1/50000 dilution. Predicted band size: 48 kDa. Observed band size: 48 kDa.