

# PHLP II Antibody



PACO50322

---

## Product Information

**Size:**

50ug

**Reactivity:**

Phleum pratense

**Source:**

Rabbit

**Isotype:**

IgG

**Applications:**

ELISA, WB

**Recommended dilutions:**

ELISA:1:2000-1:10000, WB:1:500-1:5000

**Protein Background:**

**Gene ID:**

PHLP II

**Uniprot**

P43214

**Synonyms:**

Pollen allergen Phl p 2 (Allergen Phl p II) (allergen Phl p 2), PHLP II

**Immunogen:**

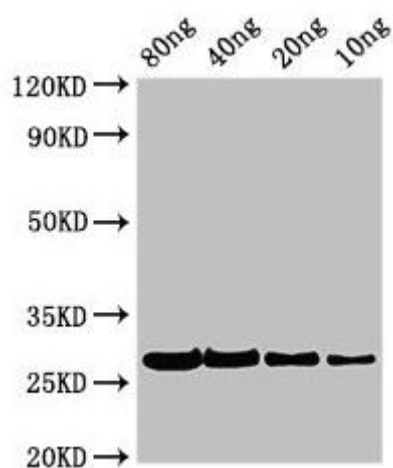
Recombinant Phleum pratense Pollen allergen Phl p 2 protein (27-122AA).

**Storage:**

Preservative: 0.03% Proclin 300. Constituents: 50% Glycerol, 0.01M PBS, pH 7.4

## Product Images

---



Western Blot. Positive WB detected in Recombinant protein. All lanes: PHLPII antibody at 2.8 $\mu$ g/ml. Secondary. Goat polyclonal to rabbit IgG at 1/50000 dilution. Predicted band size: 27 kDa. Observed band size: 27 kDa.