

PACO50354

Product Information

Size:

50ug

Reactivity:

Staphylococcus aureus

Source:

Rabbit

Isotype:

IgG

Applications:

ELISA, WB

Recommended dilutions:

ELISA:1:2000-1:10000, WB:1:500-1:5000

Protein Background:

Appears to be the primary factor that allows S.aureus growth during nitrosative stress in both aerobically and anaerobically cultured cells.

Gene ID:

ldh1

Uniprot

P65255

Synonyms:

L-lactate dehydrogenase 1 (L-LDH 1) (EC 1.1.1.27), ldhA, lctE

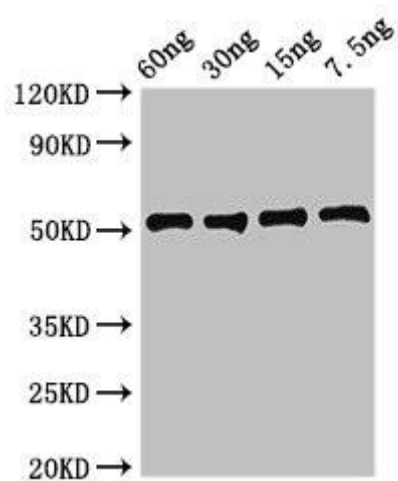
Immunogen:

Recombinant Staphylococcus aureus L-lactate dehydrogenase 1 protein (1-317AA).

Storage:

Preservative: 0.03% Proclin 300. Constituents: 50% Glycerol, 0.01M PBS, pH 7.4

Product Images



Western Blot. Positive WB detected in Recombinant protein. All lanes: Idh1 antibody at 2.7 μ g/ml. Secondary. Goat polyclonal to rabbit IgG at 1/50000 dilution. Predicted band size: 51 kDa. Observed band size: 51 kDa.