

Arginine esterase Antibody



PACO50398

Product Information

Size:

50ug

Reactivity:

Dog

Source:

Rabbit

Isotype:

IgG

Applications:

ELISA, WB

Recommended dilutions:

ELISA:1:2000-1:10000, WB:1:500-1:5000

Protein Background:

This serine protease is found in dog seminal plasma, its exact physiological function is not known.

Gene ID:**Uniprot**

P09582

Synonyms:

Arginine esterase (EC 3.4.21.35)

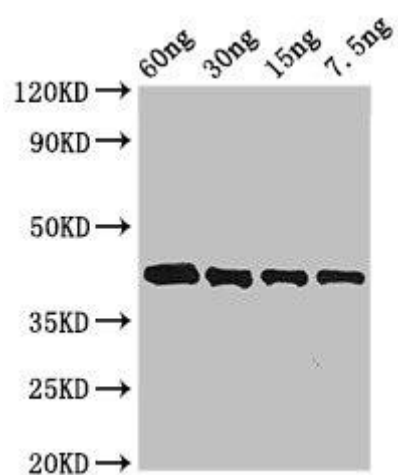
Immunogen:

Recombinant Dog Arginine esterase protein (25-260AA).

Storage:

Preservative: 0.03% Proclin 300. Constituents: 50% Glycerol, 0.01M PBS, pH 7.4

Product Images



Western Blot. Positive WB detected in Recombinant protein. All lanes: Arginine esterase antibody at 3 μ g/ml. Secondary. Goat polyclonal to rabbit IgG at 1/50000 dilution. predicted band size: 42 kDa. observed band size: 42 kDa