

Papain Antibody



PACO50406

Product Information

Size:

50ug

Reactivity:

Carica papaya

Source:

Rabbit

Isotype:

IgG

Applications:

ELISA, WB

Recommended dilutions:

ELISA:1:2000-1:10000, WB:1:500-1:5000

Protein Background:

Thiol protease with a substrate specificity very different from the other thiol proteases.

Gene ID:**Uniprot**

P00784

Synonyms:

Papain (EC 3.4.22.2) (Papaya proteinase I) (PPI) (allergen Car p 1)

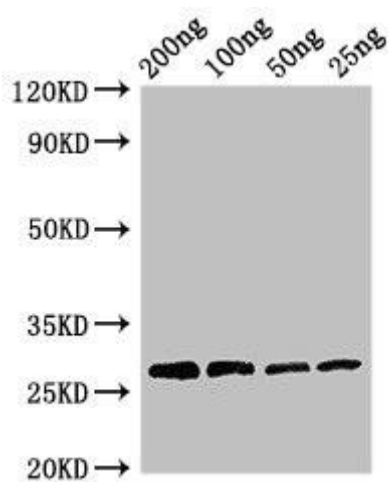
Immunogen:

Recombinant Carica papaya Papain protein (134-345AA).

Storage:

Preservative: 0.03% Proclin 300. Constituents: 50% Glycerol, 0.01M PBS, pH 7.4

Product Images



Western Blot. Positive WB detected in Recombinant protein. All lanes: Papain antibody at 3 μ g/ml. Secondary. Goat polyclonal to rabbit IgG at 1/50000 dilution. predicted band size: 27 kDa. observed band size: 27 kDa.