

PACO50418

---

## Product Information

**Size:**

50ug

**Reactivity:**

Escherichia coli

**Source:**

Rabbit

**Isotype:**

IgG

**Applications:**

ELISA, WB

**Recommended dilutions:**

ELISA:1:2000-1:10000, WB:1:500-1:5000

**Protein Background:**

Catalyzes both the ATP-dependent activation of exogenously supplied lipoate to lipoyl-AMP and the transfer of the activated lipoyl onto the lipoyl domains of lipoate-dependent enzymes.

**Gene ID:**

IplA

**Uniprot**

C4ZT68

**Synonyms:**

Lipoate-protein ligase A (EC 6.3.1.20) (Lipoate--protein ligase), IplA

**Immunogen:**

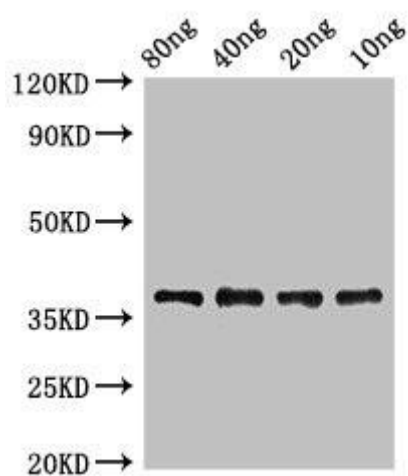
Recombinant Escherichia coli Lipoate-protein ligase A protein (1-338AA).

**Storage:**

Preservative: 0.03% Proclin 300. Constituents: 50% Glycerol, 0.01M PBS, pH 7.4

## Product Images

---



Western Blot. Positive WB detected in Recombinant protein. All lanes: IpIA antibody at 2 $\mu$ g/ml. Secondary. Goat polyclonal to rabbit IgG at 1/50000 dilution. predicted band size: 38 kDa. observed band size: 38 kDa.