

Profilin Antibody



PACO50438

Product Information

Size:

50ug

Reactivity:

Mercurialis annua

Source:

Rabbit

Isotype:

IgG

Applications:

ELISA, WB

Recommended dilutions:

ELISA:1:2000-1:10000, WB:1:500-1:5000

Protein Background:

Binds to actin and affects the structure of the cytoskeleton. At high concentrations, profilin prevents the polymerization of actin, whereas it enhances it at low concentrations. By binding to PIP2, it inhibits the formation of IP3 and DG.

Gene ID:

Uniprot

O49894

Synonyms:

Profilin (Pollen allergen Mer a 1) (allergen Mer a 1)

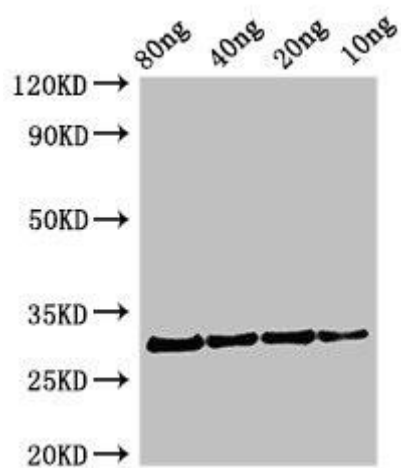
Immunogen:

Recombinant Mercurialis annua Profilin protein (1-133AA).

Storage:

Preservative: 0.03% Proclin 300. Constituents: 50% Glycerol, 0.01M PBS, pH 7.4

Product Images



Western Blot. Positive WB detected in Recombinant protein. All lanes: Profilin antibody at 2.7 μ g/ml. Secondary. Goat polyclonal to rabbit IgG at 1/50000 dilution. Predicted band size: 31 kDa. Observed band size: 31 kDa.