

FHL1 Antibody



PACO50562

Product Information

Size:

50ug

Reactivity:

Human, Mouse, Rat

Source:

Rabbit

Isotype:

IgG

Applications:

ELISA, WB, IF

Recommended dilutions:

ELISA:1:2000-1:10000, WB:1:500-1:5000,
IF:1:50-1:200

Protein Background:

May have an involvement in muscle development or hypertrophy.

Gene ID:

FHL1

Uniprot

Q13642

Synonyms:

Four and a half LIM domains protein 1 (FHL-1) (Skeletal muscle LIM-protein 1) (SLIM) (SLIM-1), FHL1, SLIM1

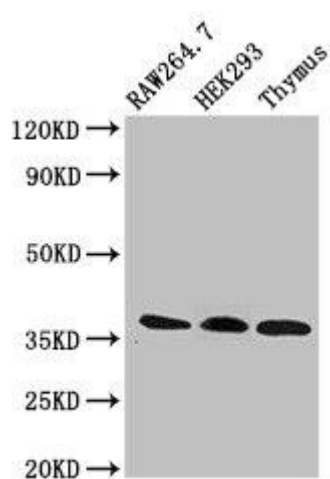
Immunogen:

Recombinant Human Four and a half LIM domains protein 1 protein (13-240AA).

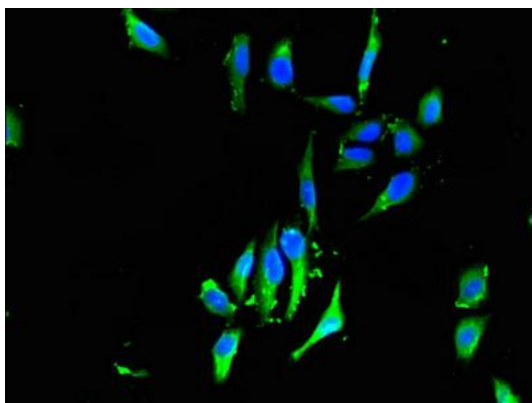
Storage:

Preservative: 0.03% Proclin 300. Constituents: 50% Glycerol, 0.01M PBS, pH 7.4

Product Images



Western Blot. Positive WB detected in: RAW264.7 whole cell lysate, HEK293 whole cell lysate, Rat thymus tissue. All lanes: FHL1 antibody at 3 μ g/ml. Secondary. Goat polyclonal to rabbit IgG at 1/50000 dilution. Predicted band size: 37, 32, 23, 35, 34 kDa. Observed band size: 37 kDa.



Immunofluorescent analysis of HeLa cells using PACO50562 at dilution of 1:100 and Alexa Fluor 488-conjugated AffiniPure Goat Anti-Rabbit IgG(H+L).