

SCARB2 Antibody



PACO50566

Product Information

Size:

50ug

Reactivity:

Human, Mouse

Source:

Rabbit

Isotype:

IgG

Applications:

ELISA, WB, IHC, IF

Recommended dilutions:

ELISA:1:2000-1:10000, WB:1:500-1:5000,
IHC:1:20-1:200, IF:1:50-1:200

Protein Background:

Acts as a lysosomal receptor for glucosylceramidase (GBA) targeting.

Gene ID:

SCARB2

Uniprot

Q14108

Synonyms:

Lysosome membrane protein 2 (85 kDa lysosomal membrane sialoglycoprotein) (LGP85) (CD36 antigen-like 2) (Lysosome membrane protein II) (LIMP II) (Scavenger receptor class B member 2) (CD antigen CD36), SCARB2, CD36L2 LIMP2 LIMPII

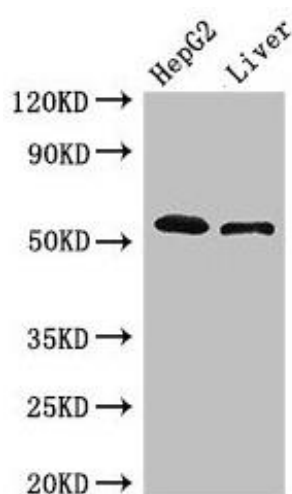
Immunogen:

Recombinant Human Lysosome membrane protein 2 protein (47-128AA).

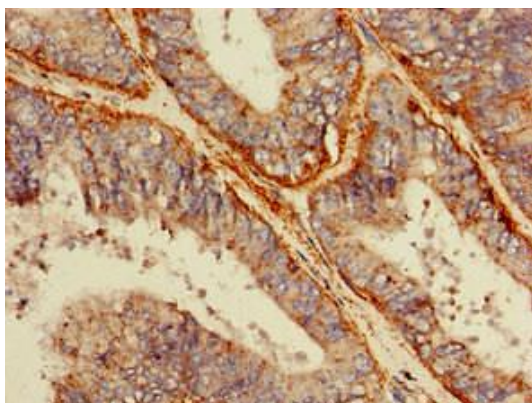
Storage:

Preservative: 0.03% Proclin 300. Constituents: 50% Glycerol, 0.01M PBS, pH 7.4

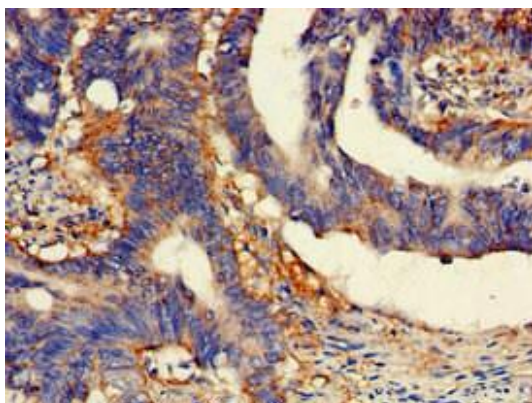
Product Images



Western Blot. Positive WB detected in: HepG2 whole cell lysate, Mouse liver tissue. All lanes: SCARB2 antibody at 3 μ g/ml. Secondary. Goat polyclonal to rabbit IgG at 1/50000 dilution. Predicted band size: 55, 38 kDa. Observed band size: 55 kDa.



Immunohistochemistry of paraffin-embedded human endometrial cancer using PACO50566 at dilution of 1:100.



Immunohistochemistry of paraffin-embedded human colon cancer using PACO50566 at dilution of 1:100.