

## Product Information

**Size:**

50ug

**Reactivity:**

Human

**Source:**

Rabbit

**Isotype:**

IgG

**Applications:**

ELISA, IF

**Recommended dilutions:**

ELISA:1:2000-1:10000, IF:1:50-1:200

**Protein Background:**

Caspase-like protease, which plays a central role in the chromosome segregation by cleaving the SCC1/RAD21 subunit of the cohesin complex at the onset of anaphase. During most of the cell cycle, it is inactivated by different mechanisms.

**Gene ID:**

ESPL1

**Uniprot**

Q14674

**Synonyms:**

Separin (EC 3.4.22.49) (Caspase-like protein ESPL1) (Extra spindle poles-like 1 protein) (Separase), ESPL1, ESP1 KIAA0165

**Immunogen:**

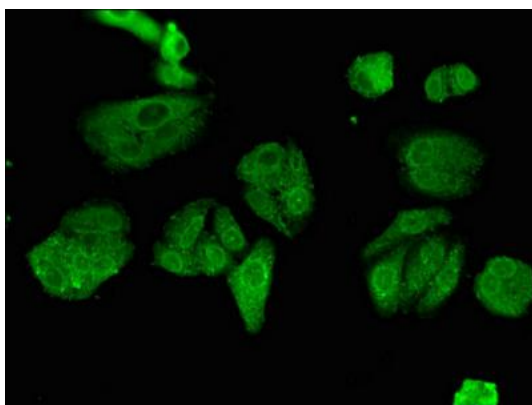
Recombinant Human Separin protein (1292-1495AA).

**Storage:**

Preservative: 0.03% Proclin 300. Constituents: 50% Glycerol, 0.01M PBS, pH 7.4

## Product Images

---



Immunofluorescent analysis of HepG2 cells using PACO50574 at dilution of 1:100 and Alexa Fluor 488-conjugated AffiniPure Goat Anti-Rabbit IgG(H+L).