

PACO50626

---

## Product Information

**Size:**

50ug

**Reactivity:**

Streptococcus pyogenes serotype M28

**Source:**

Rabbit

**Isotype:**

IgG

**Applications:**

ELISA, WB

**Recommended dilutions:**

ELISA:1:2000-1:10000, WB:1:500-1:5000

**Protein Background:**

Important streptococcal virulence factor which cleaves human fibronectin and degrades vitronectin. Also cleaves human IL1B precursor to form biologically active IL1B. Can induce apoptosis in human monocytes and epithelial cells in vitro, and reduces phagocytic activity in monocytic cells. Thus, may play a role in bacterial colonization, invasion, and inhibition of wound healing.

**Gene ID:**

speB

**Uniprot**

Q48R29

**Synonyms:**

Streptopain (EC 3.4.22.10) (Exotoxin type B) (SPE B) (Streptococcal cysteine proteinase) (Streptococcus peptidase A) (SPP), speB

**Immunogen:**

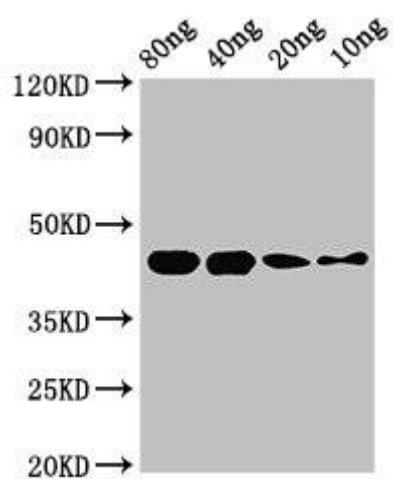
Recombinant Streptococcus pyogenes serotype M28 Streptopain protein (146-398AA).

**Storage:**

Preservative: 0.03% Proclin 300. Constituents: 50% Glycerol, 0.01M PBS, pH 7.4

## Product Images

---



Western Blot. Positive WB detected in Recombinant protein. All lanes: speB antibody at 2.8 $\mu$ g/ml. Secondary. Goat polyclonal to rabbit IgG at 1/50000 dilution. Predicted band size: 44 kDa. Observed band size: 44 kDa.