

PACO50678

Product Information

Size:

50ug

Reactivity:

Human

Source:

Rabbit

Isotype:

IgG

Applications:

ELISA, WB, IHC

Recommended dilutions:

ELISA:1:2000-1:10000, WB:1:500-1:5000,
IHC:1:20-1:200

Protein Background:

Probably plays a structural role in chromatin. Involved in sister chromatid cohesion, possibly by interacting with the cohesin complex.

Gene ID:

NIPBL

Uniprot

Q6K79

Synonyms:

Nipped-B-like protein (Delangin) (SCC2 homolog), NIPBL, IDN3 SCC2

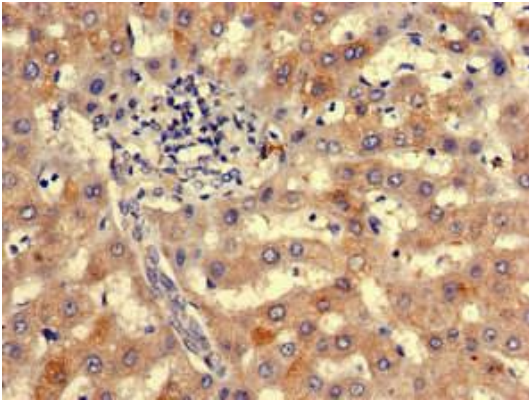
Immunogen:

Recombinant Human Nipped-B-like protein (2523-2697AA).

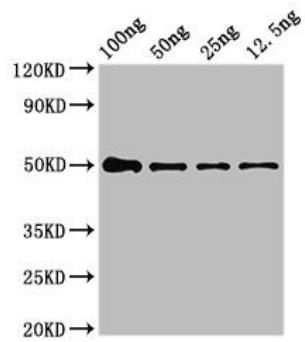
Storage:

Preservative: 0.03% Proclin 300. Constituents: 50% Glycerol, 0.01M PBS, pH 7.4

Product Images



Immunohistochemistry of paraffin-embedded human liver tissue using PACO50678 at dilution of 1:100.



Western Blot

Positive WB detected in Recombinant protein

All lanes: NIPBL antibody at 4 μ g/ml

Secondary

Goat polyclonal to rabbit IgG at 1/50000 dilution

predicted band size: 50 kDa

observed band size: 50 kDa.