

PACO50714

Product Information

Size:

50ug

Reactivity:

Human, Mouse, Rat

Source:

Rabbit

Isotype:

IgG

Applications:

ELISA, WB, IF

Recommended dilutions:

ELISA:1:2000-1:10000, WB:1:500-1:5000,
IF:1:50-1:200

Protein Background:

May play a role in translational regulation of stored mRNAs in transcriptionally inactive haploid spermatids. Binds to poly(U) RNA oligomers.

Gene ID:

CPEB2

Uniprot

Q7Z5Q1

Synonyms:

Cytoplasmic polyadenylation element-binding protein 2 (CPE-BP2) (CPE-binding protein 2) (hCPEB-2), CPEB2

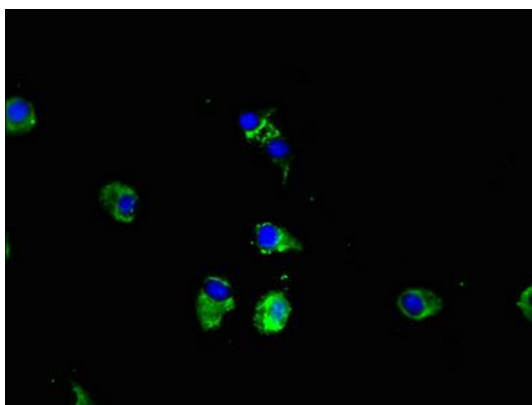
Immunogen:

Recombinant Human Cytoplasmic polyadenylation element-binding protein 2 protein (167-308AA).

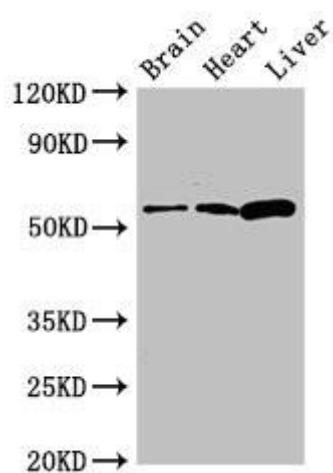
Storage:

Preservative: 0.03% Proclin 300. Constituents: 50% Glycerol, 0.01M PBS, pH 7.4

Product Images



Immunofluorescent analysis of HeLa cells using PACO50714 at dilution of 1:100 and Alexa Fluor 488-conjugated AffiniPure Goat Anti-Rabbit IgG(H+L).



Western Blot. Positive WB detected in: Mouse brain tissue, Rat heart tissue, Rat liver tissue. All lanes: CPEB2 antibody at 2.7 μ g/ml. Secondary. Goat polyclonal to rabbit IgG at 1/50000 dilution. Predicted band size: 65, 63, 62, 107, 110 kDa. Observed band size: 65 kDa.