

C16orf62 Antibody



PACO50738

Product Information

Size:

50ug

Reactivity:

Human

Source:

Rabbit

Isotype:

IgG

Applications:

ELISA, WB, IF

Recommended dilutions:

ELISA:1:2000-1:10000, WB:1:500-1:5000,
IF:1:50-1:200

Protein Background:

Involved in copper-dependent ATP7A trafficking between the trans-Golgi network and vesicles in the cell periphery; the function is proposed to depend on its association within the CCC complex and cooperation with the WASH complex on early endosomes. Seems not to be required for CCC complex stability.

Gene ID:

C16orf62

Uniprot

Q7Z3J2

Synonyms:

UPF0505 protein C16orf62 (Esophageal cancer-associated protein), C16orf62

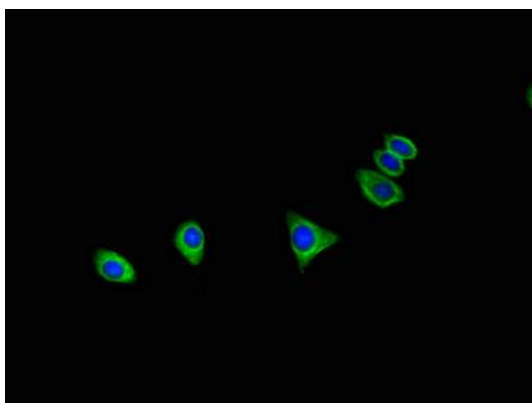
Immunogen:

Recombinant Human UPF0505 protein C16orf62 protein (6-205AA).

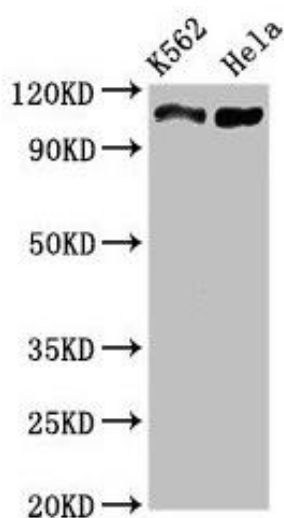
Storage:

Preservative: 0.03% Proclin 300. Constituents: 50% Glycerol, 0.01M PBS, pH 7.4

Product Images



Immunofluorescent analysis of HepG2 cells using PACO50738 at dilution of 1:100 and Alexa Fluor 488-conjugated AffiniPure Goat Anti-Rabbit IgG(H+L).



Western Blot. Positive WB detected in: K562 whole cell lysate, HeLa whole cell lysate. All lanes: C16orf62 antibody at 3 μ g/ml. Secondary. Goat polyclonal to rabbit IgG at 1/50000 dilution. Predicted band size: 110, 94 kDa. Observed band size: 110 kDa.