

# SULF2 Antibody



PACO50762

---

## Product Information

**Size:**

50ug

**Reactivity:**

Human, Mouse, Rat

**Source:**

Rabbit

**Isotype:**

IgG

**Applications:**

ELISA, WB, IHC, IF

**Recommended dilutions:**

ELISA:1:2000-1:10000, WB:1:500-1:5000,  
IHC:1:20-1:200, IF:1:50-1:200

**Protein Background:**

Exhibits arylsulfatase activity and highly specific endoglucosamine-6-sulfatase activity. It can remove sulfate from the C-6 position of glucosamine within specific subregions of intact heparin.

**Gene ID:**

SULF2

**Uniprot**

Q8IWU5

**Synonyms:**

Extracellular sulfatase Sulf-2 (hSulf-2) (EC 3.1.6), SULF2, KIAA1247

**Immunogen:**

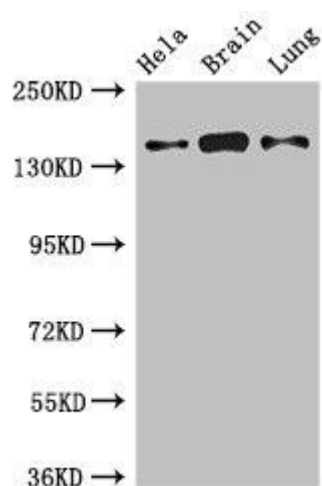
Recombinant Human Extracellular sulfatase Sulf-2 protein (463-660AA).

**Storage:**

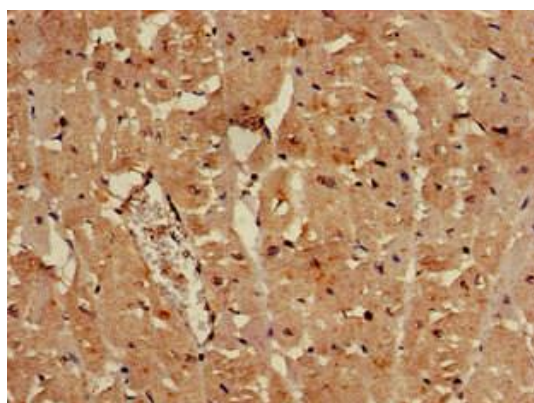
Preservative: 0.03% Proclin 300. Constituents: 50% Glycerol, 0.01M PBS, pH 7.4

## Product Images

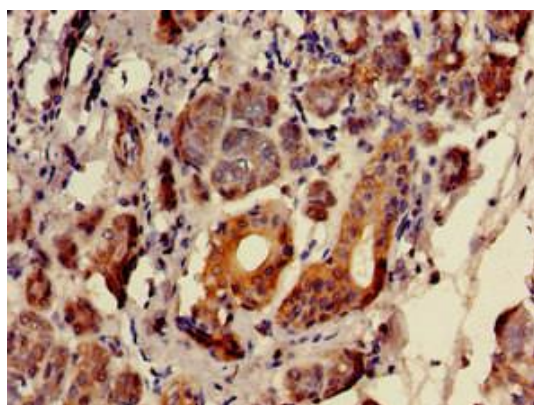
---



Western Blot. Positive WB detected in: HeLa whole cell lysate, Mouse brain tissue, Rat lung tissue. All lanes: SULF2 antibody at 2.7 $\mu$ g/ml. Secondary. Goat polyclonal to rabbit IgG at 1/50000 dilution. Predicted band size: 101 kDa. Observed band size: 140 kDa.



Immunohistochemistry of paraffin-embedded human heart tissue using PACO50762 at dilution of 1:100.



Immunohistochemistry of paraffin-embedded human salivary gland tissue using PACO50762 at dilution of 1:100.