

LAX1 Antibody



PACO50766

Product Information

Size:

50ug

Reactivity:

Human, Mouse, Rat

Source:

Rabbit

Isotype:

IgG

Applications:

ELISA, WB, IF

Recommended dilutions:

ELISA:1:2000-1:10000, WB:1:500-1:5000,
IF:1:50-1:200

Protein Background:

Negatively regulates TCR (T-cell antigen receptor)-mediated signaling in T-cells and BCR (B-cell antigen receptor)-mediated signaling in B-cells.

Gene ID:

LAX1

Uniprot

Q8IWW1

Synonyms:

Lymphocyte transmembrane adapter 1 (Linker for activation of X cells) (Membrane-associated adapter protein LAX), LAX1, LAX

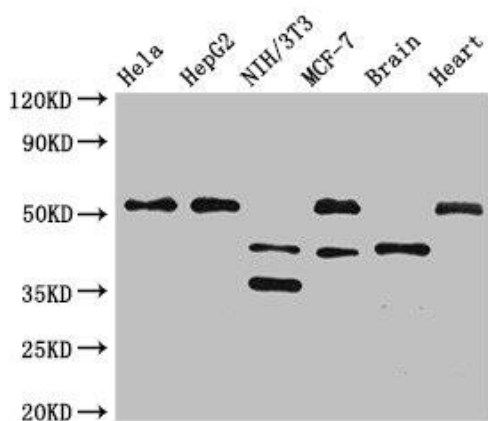
Immunogen:

Recombinant Human Lymphocyte transmembrane adapter 1 protein (107-298AA).

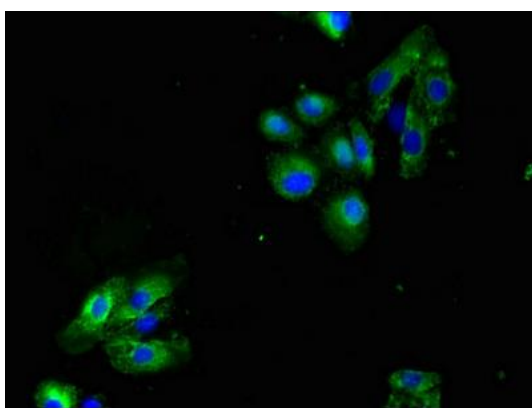
Storage:

Preservative: 0.03% Proclin 300. Constituents: 50% Glycerol, 0.01M PBS, pH 7.4

Product Images



Western Blot. Positive WB detected in: HeLa whole cell lysate, HepG2 whole cell lysate, NIH/3T3 whole cell lysate, MCF-7 whole cell lysate, Mouse brain tissue, Rat heart tissue. All lanes: LAX1 antibody at 2.7 μ g/ml. Secondary. Goat polyclonal to rabbit IgG at 1/50000 dilution. Predicted band size: 45, 36, 43 kDa. Observed band size: 51, 45, 36 kDa.



Immunofluorescent analysis of HepG2 cells using PACO50766 at dilution of 1:100 and Alexa Fluor 488-conjugated AffiniPure Goat Anti-Rabbit IgG(H+L).