

# BBS10 Antibody



PACO50806

---

## Product Information

**Size:**

50ug

**Reactivity:**

Human

**Source:**

Rabbit

**Isotype:**

IgG

**Applications:**

ELISA, IHC

**Recommended dilutions:**

ELISA:1:2000-1:10000, IHC:1:20-1:200

**Protein Background:**

Probable molecular chaperone. Assists the folding of proteins upon ATP hydrolysis. As part of the BBS/CCT complex may play a role in the assembly of BBSome, a complex involved in ciliogenesis regulating transports vesicles to the cilia. Involved in adipogenic differentiation.

**Gene ID:**

BBS10

**Uniprot**

Q8TAM1

**Synonyms:**

Bardet-Biedl syndrome 10 protein, BBS10, C12orf58

**Immunogen:**

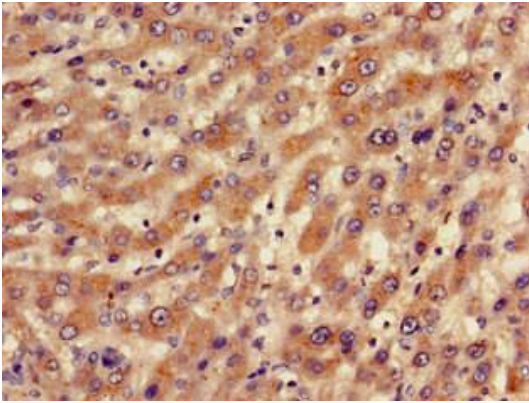
Recombinant Human Bardet-Biedl syndrome 10 protein (435-552AA).

**Storage:**

Preservative: 0.03% Proclin 300. Constituents: 50% Glycerol, 0.01M PBS, pH 7.4

## Product Images

---



Immunohistochemistry of paraffin-embedded human liver cancer using PACO50806 at dilution of 1:100.