

IL22RA2 Antibody



PACO50886

Product Information

Size:

50ug

Reactivity:

Human

Source:

Rabbit

Isotype:

IgG

Applications:

ELISA, IHC

Recommended dilutions:

ELISA:1:2000-1:10000, IHC:1:20-1:200

Protein Background:

Isoform 2 is a receptor for IL22. Binds to IL22, prevents interaction with the functional IL-22R complex and blocks the activity of IL22 (in vitro). May play an important role as an IL22 antagonist in the regulation of inflammatory responses.

Gene ID:

IL22RA2

Uniprot

Q969J5

Synonyms:

Interleukin-22 receptor subunit alpha-2 (IL-22 receptor subunit alpha-2) (IL-22R-alpha-2) (IL-22RA2) (Cytokine receptor class-II member 10) (Cytokine receptor family 2 member 10) (CRF2-10) (Cytokine receptor family type 2, soluble 1) (CRF2-S1) (Interleukin-22-binding protein) (IL-22BP) (IL22BP) (ZcytoR16), IL22RA2

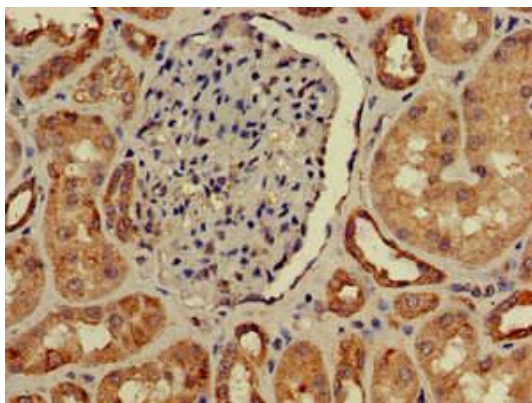
Immunogen:

Recombinant Human Interleukin-22 receptor subunit alpha-2 protein (22-263AA).

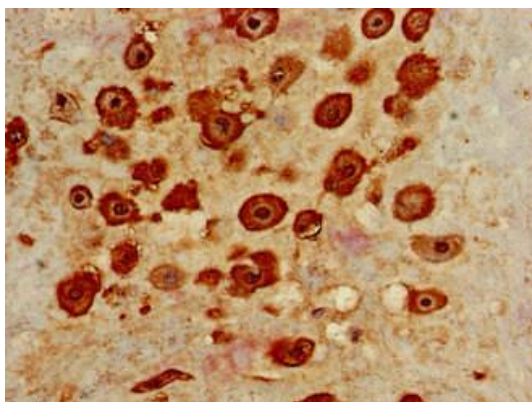
Storage:

Preservative: 0.03% Proclin 300. Constituents: 50% Glycerol, 0.01M PBS, pH 7.4

Product Images



Immunohistochemistry of paraffin-embedded human kidney tissue using PACO50886 at dilution of 1:100.



Immunohistochemistry of paraffin-embedded human placenta tissue using PACO50886 at dilution of 1:100.