

Product Information

Size:

50ug

Reactivity:

Human

Source:

Rabbit

Isotype:

IgG

Applications:

ELISA, IHC, IF

Recommended dilutions:

ELISA:1:2000-1:10000, IHC:1:20-1:200,
IF:1:50-1:200

Protein Background:

Plays a role in cell-cell interaction, cell migration, and angiogenesis. Through interaction with HHLA2, costimulates T-cells in the context of TCR-mediated activation. Enhances T-cell proliferation and cytokine production via an AKT-dependent signaling cascade.

Gene ID:

TMIGD2

Uniprot

Q96BF3

Synonyms:

Transmembrane and immunoglobulin domain-containing protein 2 (CD28 homolog) (Immunoglobulin and proline-rich receptor 1) (IGPR-1), TMIGD2, CD28H IGPR1

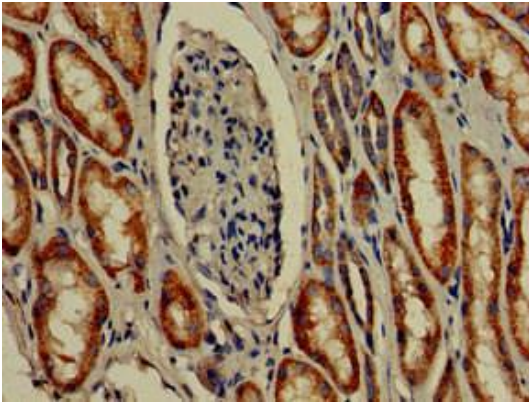
Immunogen:

Recombinant Human Transmembrane and immunoglobulin domain-containing protein 2 protein (23-150AA).

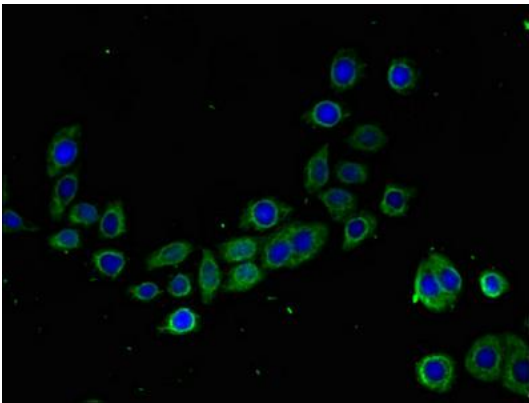
Storage:

Preservative: 0.03% Proclin 300. Constituents: 50% Glycerol, 0.01M PBS, pH 7.4

Product Images



Immunohistochemistry of paraffin-embedded human kidney tissue using PACO50894 at dilution of 1:100.



Immunofluorescent analysis of PC-3 cells using PACO50894 at dilution of 1:100 and Alexa Fluor 488-conjugated AffiniPure Goat Anti-Rabbit IgG(H+L).