

CPT1C Antibody



PACO50926

Product Information

Size:

50ug

Reactivity:

Human, Mouse

Source:

Rabbit

Isotype:

IgG

Applications:

ELISA, WB, IHC

Recommended dilutions:

ELISA:1:2000-1:10000, WB:1:500-1:5000,
IHC:1:20-1:200

Protein Background:

May play a role in lipid metabolic process.

Gene ID:

CPT1C

Uniprot

Q8TCG5

Synonyms:

Carnitine O-palmitoyltransferase 1, brain isoform (CPT1-B) (EC 2.3.1.21) (CPT IC)
(Carnitine O-palmitoyltransferase I, brain isoform) (CPTI-B) (Carnitine
palmitoyltransferase 1C), CPT1C, CATL1

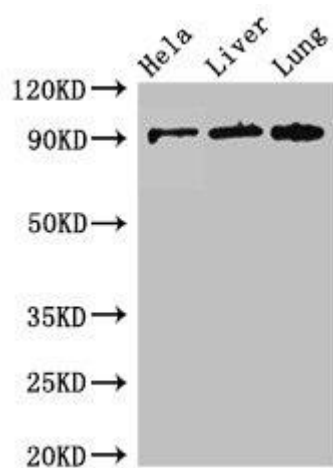
Immunogen:

Recombinant Human Carnitine O-palmitoyltransferase 1, brain isoform protein (699-
803AA).

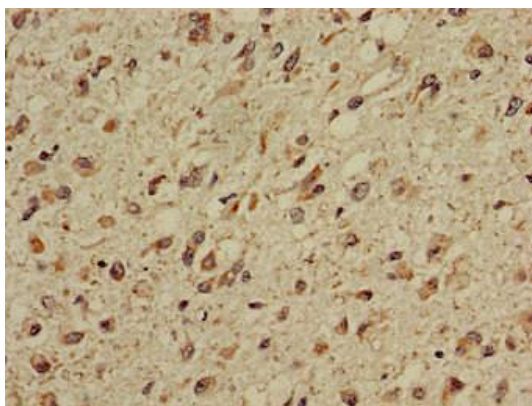
Storage:

Preservative: 0.03% Proclin 300. Constituents: 50% Glycerol, 0.01M PBS, pH 7.4

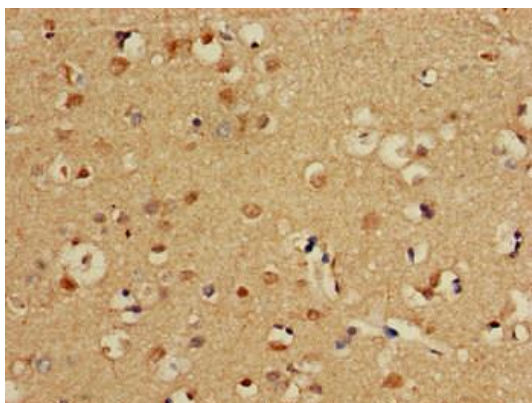
Product Images



Western Blot. Positive WB detected in: HeLa whole cell lysate, Mouse liver tissue, Mouse lung tissue. All lanes: CPT1C antibody at 2.6 μ g/ml. Secondary. Goat polyclonal to rabbit IgG at 1/50000 dilution. Predicted band size: 91, 90, 81 kDa. Observed band size: 91 kDa.



Immunohistochemistry of paraffin-embedded human glioma using PACO50926 at dilution of 1:100.



Immunohistochemistry of paraffin-embedded human brain tissue using PACO50926 at dilution of 1:100.