

PACO50934

Product Information

Size:

50ug

Reactivity:

Naja kaouthia

Source:

Rabbit

Isotype:

IgG

Applications:

ELISA, WB

Recommended dilutions:

ELISA:1:2000-1:10000, WB:1:500-1:5000

Protein Background:

Complement-activating protein in cobra venom. It is a structural and functional analog of complement component C3b, the activated form of C3. It binds factor B (CFB), which is subsequently cleaved by factor D (CFD) to form the bimolecular complex CVF/Bb. CVF/Bb is a C3/C5 convertase that cleaves both complement components C3 and C5. Structurally, it resembles the C3b degradation product C3c, which is not able to form a C3/C5 convertase. Unlike C3b/Bb, CVF/Bb is a stable complex and completely resistant to the actions of complement regulatory factors H (CFH) and I (CFI). Therefore, CVF continuously activates complement resulting in the depletion of complement activity.

Gene ID:**Uniprot**

Q91132

Synonyms:

Cobra venom factor (CVF) (CVFk) (Complement C3 homolog) [Cleaved into: Cobra venom factor alpha chain; Cobra venom factor gamma chain; Cobra venom factor beta chain]

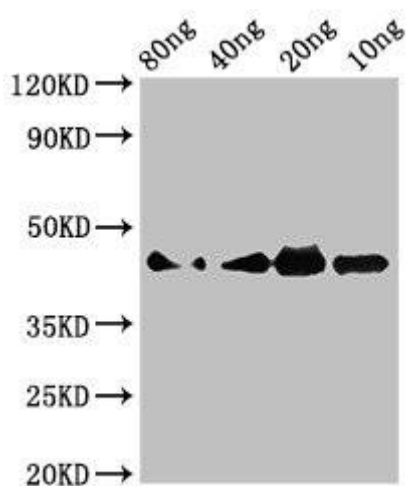
Immunogen:

Recombinant Naja kaouthia Cobra venom factor protein (733-984AA).

Storage:

Preservative: 0.03% Proclin 300. Constituents: 50% Glycerol, 0.01M PBS, pH 7.4

Product Images



Western Blot. Positive WB detected in Recombinant protein. All lanes: Cobra venom factor antibody at 3 μ g/ml. Secondary. Goat polyclonal to rabbit IgG at 1/50000 dilution. predicted band size: 45 kDa. observed band size: 45 kDa.