

# CREB3L1 Antibody



PACO50938

---

## Product Information

**Size:**

50ug

**Reactivity:**

Human, Mouse, Rat

**Source:**

Rabbit

**Isotype:**

IgG

**Applications:**

ELISA, WB, IHC, IF

**Recommended dilutions:**

ELISA:1:2000-1:10000, WB:1:200-1:5000,  
IHC:1:20-1:200, IF:1:50-1:200

**Protein Background:****Gene ID:**

CREB3L1

**Uniprot**

Q96BA8

**Synonyms:**

Cyclic AMP-responsive element-binding protein 3-like protein 1 (cAMP-responsive element-binding protein 3-like protein 1) (Old astrocyte specifically-induced substance) (OASIS) [Cleaved into: Processed cyclic AMP-responsive element-binding protein 3-like protein 1], CREB3L1, OASIS

**Immunogen:**

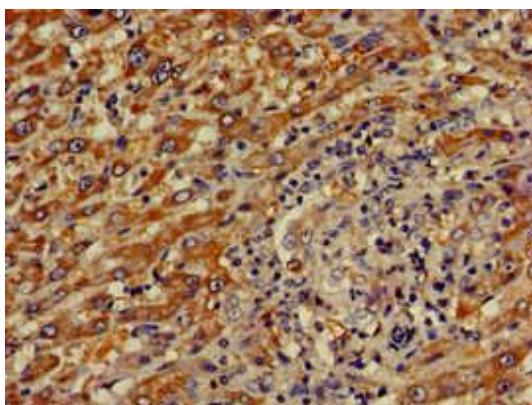
Recombinant Human Cyclic AMP-responsive element-binding protein 3-like protein 1 protein (396-500AA).

**Storage:**

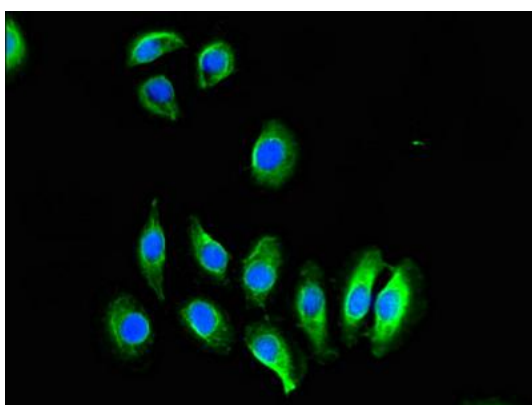
Preservative: 0.03% Proclin 300. Constituents: 50% Glycerol, 0.01M PBS, pH 7.4

## Product Images

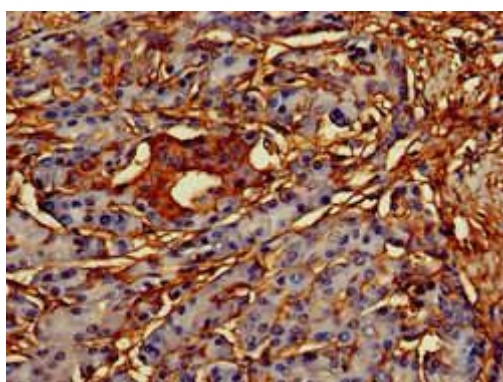
---



Immunohistochemistry of paraffin-embedded human liver cancer using PACO50938 at dilution of 1:100.



Immunofluorescent analysis of A549 cells using PACO50938 at dilution of 1:100 and Alexa Fluor 488-conjugated AffiniPure Goat Anti-Rabbit IgG(H+L).



Immunohistochemistry of paraffin-embedded human pancreatic tissue using PACO50938 at dilution of 1:100.