

PACO50954

Product Information

Size:

50ug

Reactivity:

Human

Source:

Rabbit

Isotype:

IgG

Applications:

ELISA, WB, IHC, IF

Recommended dilutions:

ELISA:1:2000-1:10000, WB:1:500-1:5000,
IHC:1:20-1:200, IF:1:50-1:200

Protein Background:

Scaffolding protein that assembles several protein kinases and phosphatases on the centrosome and Golgi apparatus. Required to maintain the integrity of the Golgi apparatus. Recruited to the Golgi apparatus by GM130/GOLGA2 and is required for microtubule nucleation at the cis-side of the Golgi apparatusGM130/GOLGA2.

Gene ID:

AKAP9

Uniprot

Q99996

Synonyms:

A-kinase anchor protein 9 (AKAP-9) (A-kinase anchor protein 350 kDa) (AKAP 350) (hgAKAP 350) (A-kinase anchor protein 450 kDa) (AKAP 450) (AKAP 120-like protein) (Centrosome- and Golgi-localized PKN-associated protein) (CG-NAP) (Protein hyperion) (Protein kinase A-anchoring protein 9) (PRKA9) (Protein yotiao), AKAP9, AKAP350 AKAP450 KIAA0803

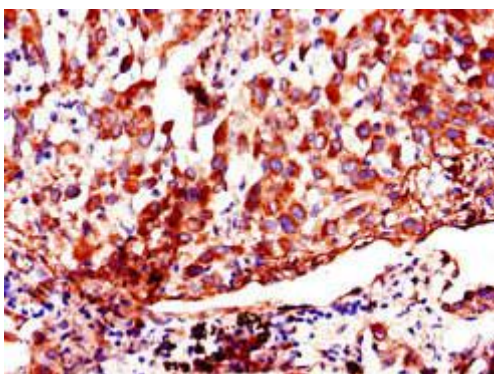
Immunogen:

Recombinant Human A-kinase anchor protein 9 protein (71-191AA).

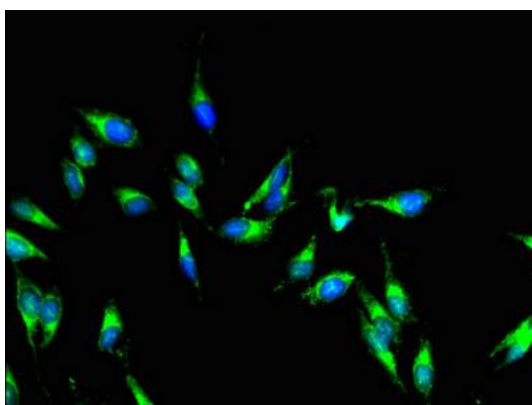
Storage:

Preservative: 0.03% Proclin 300. Constituents: 50% Glycerol, 0.01M PBS, pH 7.4

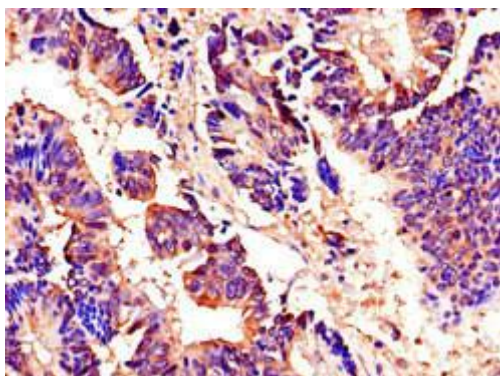
Product Images



Immunohistochemistry of paraffin-embedded human lung cancer using PACO50954 at dilution of 1:100.



Immunofluorescent analysis of HeLa cells using PACO50954 at dilution of 1:100 and Alexa Fluor 488-conjugated AffiniPure Goat Anti-Rabbit IgG(H+L).



Immunohistochemistry of paraffin-embedded human colon cancer using PACO50954 at dilution of 1:100.