

GPR22 Antibody



PACO50974

Product Information

Size:

50ug

Reactivity:

Human, Mouse

Source:

Rabbit

Isotype:

IgG

Applications:

ELISA, WB, IF

Recommended dilutions:

ELISA:1:2000-1:10000, WB:1:500-1:5000,
IF:1:50-1:200

Protein Background:

Orphan receptor.

Gene ID:

GPR22

Uniprot

Q99680

Synonyms:

Probable G-protein coupled receptor 22, GPR22

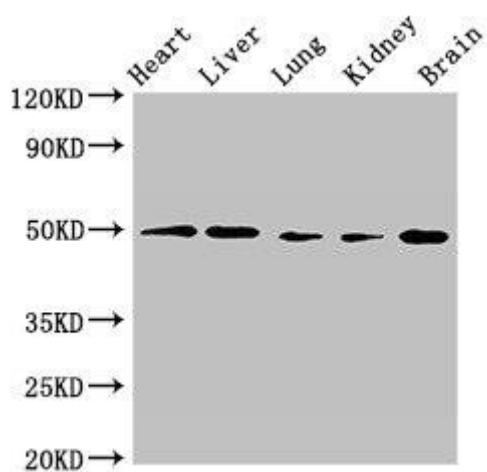
Immunogen:

Recombinant Human Probable G-protein coupled receptor 22 protein (246-307AA).

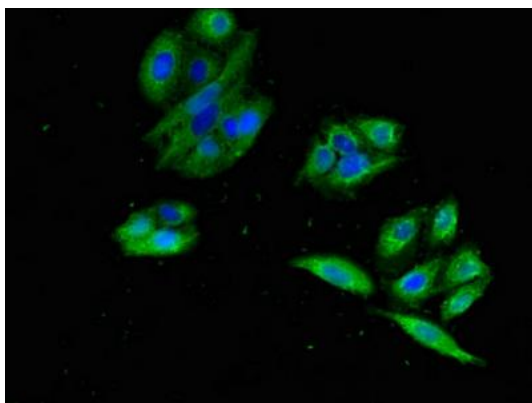
Storage:

Preservative: 0.03% Proclin 300. Constituents: 50% Glycerol, 0.01M PBS, pH 7.4

Product Images



Western Blot. Positive WB detected in: Mouse heart tissue, Mouse liver tissue, Mouse lung tissue, Mouse kidney tissue, Mouse brain tissue. All lanes: GPR22 antibody at 2.5 μ g/ml. Secondary. Goat polyclonal to rabbit IgG at 1/50000 dilution. Predicted band size: 50 kDa. Observed band size: 50 kDa.



Immunofluorescent analysis of HepG2 cells using PACO50974 at dilution of 1:100 and Alexa Fluor 488-conjugated AffiniPure Goat Anti-Rabbit IgG(H+L).