

SLC40A1 Antibody



PACO51014

Product Information

Size:

50ug

Reactivity:

Human

Source:

Rabbit

Isotype:

IgG

Applications:

ELISA, IF

Recommended dilutions:

ELISA:1:2000-1:10000, IF:1:50-1:200

Protein Background:

May be involved in iron export from duodenal epithelial cell and also in transfer of iron between maternal and fetal circulation. Mediates iron efflux in the presence of a ferroxidase (hephaestin and/or ceruloplasmin).

Gene ID:

SLC40A1

Uniprot

Q9NP59

Synonyms:

Solute carrier family 40 member 1 (Ferroportin-1) (Iron-regulated transporter 1), SLC40A1, FPN1 IREG1 SLC11A3

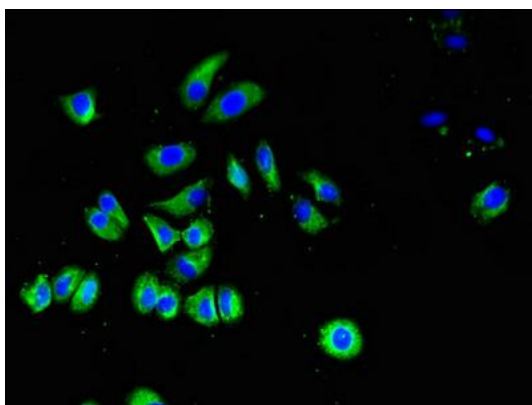
Immunogen:

Recombinant Human Solute carrier family 40 member 1 protein (148-298AA).

Storage:

Preservative: 0.03% Proclin 300. Constituents: 50% Glycerol, 0.01M PBS, pH 7.4

Product Images



Immunofluorescent analysis of HepG2 cells using PACO51014 at dilution of 1:100 and Alexa Fluor 488-conjugated AffiniPure Goat Anti-Rabbit IgG(H+L).