

PACO51062

Product Information

Size:

50ug

Reactivity:

Human, Mouse

Source:

Rabbit

Isotype:

IgG

Applications:

ELISA, WB, IHC

Recommended dilutions:

ELISA:1:2000-1:10000, WB:1:500-1:5000,
IHC:1:20-1:200

Protein Background:

Transport urate and fructose. May have a role in the urate reabsorption by proximal tubules. Also transports glucose at low rate.

Gene ID:

SLC2A9

Uniprot

Q9NRM0

Synonyms:

Solute carrier family 2, facilitated glucose transporter member 9 (Glucose transporter type 9) (GLUT-9), SLC2A9, GLUT9

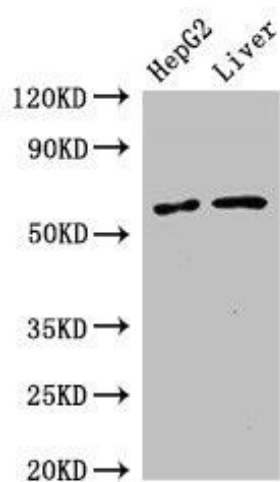
Immunogen:

Recombinant Human Solute carrier family 2, facilitated glucose transporter member 9 protein (473-511AA).

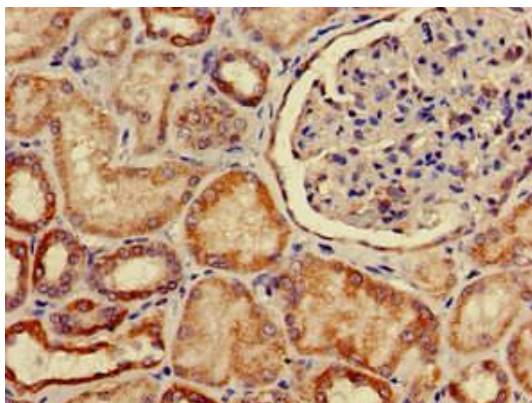
Storage:

Preservative: 0.03% Proclin 300. Constituents: 50% Glycerol, 0.01M PBS, pH 7.4

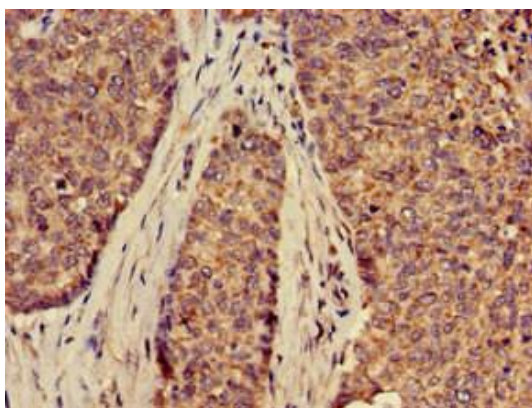
Product Images



Western Blot. Positive WB detected in: HepG2 whole cell lysate, Mouse liver tissue. All lanes: SLC2A9 antibody at 2.7 μ g/ml. Secondary. Goat polyclonal to rabbit IgG at 1/50000 dilution. Predicted band size: 59, 56 kDa. Observed band size: 59 kDa.



Immunohistochemistry of paraffin-embedded human kidney tissue using PACO51062 at dilution of 1:100.



Immunohistochemistry of paraffin-embedded human ovarian cancer using PACO51062 at dilution of 1:100.