

### Product Information

**Size:**

50ug

**Reactivity:**

Arabidopsis thaliana

**Source:**

Rabbit

**Isotype:**

IgG

**Applications:**

ELISA, WB

**Recommended dilutions:**

ELISA:1:2000-1:10000, WB:1:500-1:5000

**Protein Background:**

This protein is an auxiliary protein of DNA polymerase delta and is involved in the control of eukaryotic DNA replication by increasing the polymerase's processibility during elongation of the leading strand.

**Gene ID:**

PCNA

**Uniprot**

Q9M7Q7

**Synonyms:**

Proliferating cellular nuclear antigen 1 (PCNA 1), PCNA, PCNA1

**Immunogen:**

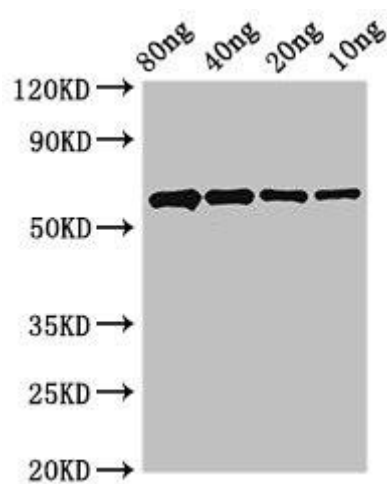
Recombinant Arabidopsis thaliana Proliferating cellular nuclear antigen 1 protein (1-263AA).

**Storage:**

Preservative: 0.03% Proclin 300. Constituents: 50% Glycerol, 0.01M PBS, pH 7.4

## Product Images

---



Western Blot. Positive WB detected in Recombinant protein. All lanes: PCNA antibody at 2.4 $\mu$ g/ml. Secondary. Goat polyclonal to rabbit IgG at 1/50000 dilution. Predicted band size: 59 kDa. Observed band size: 59 kDa.