

Product Information

Size:

50ug

Reactivity:

Human, Mouse, Rat

Source:

Rabbit

Isotype:

IgG

Applications:

ELISA, WB, IHC, IF

Recommended dilutions:

ELISA:1:2000-1:10000, WB:1:500-1:5000,
IHC:1:20-1:200, IF:1:50-1:200

Protein Background:

May be involved in ubiquitination and subsequent proteasomal degradation of target proteins. Component of the DDD-E2 complexes which may provide a platform for interaction with CUL4A and WD repeat proteins.

Gene ID:

DDA1

Uniprot

Q9BW61

Synonyms:

DET1- and DDB1-associated protein 1 (Placenta cross-immune reaction antigen 1) (PCIA-1), DDA1, C19orf58 PCIA1

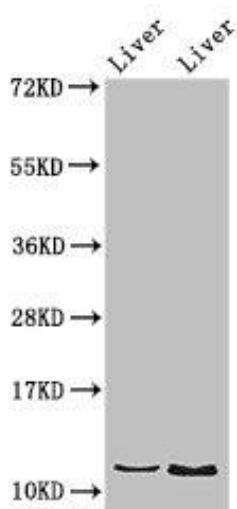
Immunogen:

Recombinant Human DET1- and DDB1-associated protein 1 protein (1-102AA).

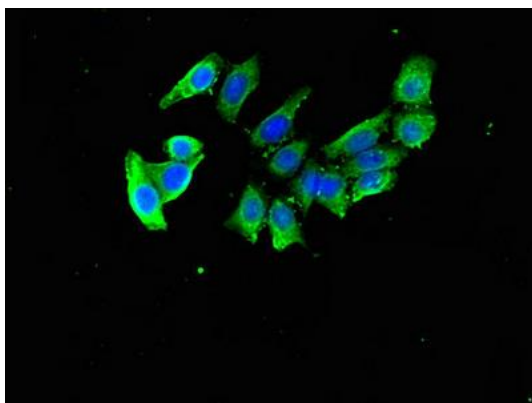
Storage:

Preservative: 0.03% Proclin 300. Constituents: 50% Glycerol, 0.01M PBS, pH 7.4

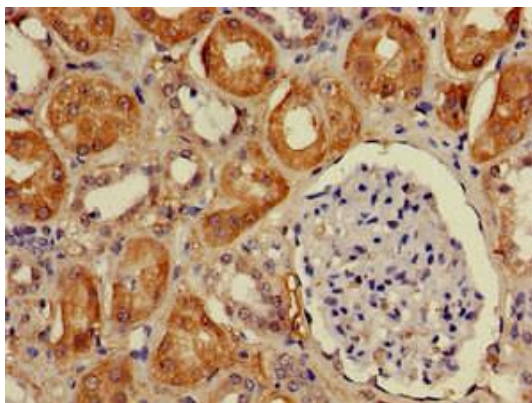
Product Images



Western Blot. Positive WB detected in: Rat liver tissue, Mouse liver tissue. All lanes: DDA1 antibody at 2.8 μ g/ml. Secondary. Goat polyclonal to rabbit IgG at 1/50000 dilution. Predicted band size: 12 kDa. Observed band size: 12 kDa.



Immunofluorescent analysis of PC-3 cells using PACO51082 at dilution of 1:100 and Alexa Fluor 488-conjugated AffiniPure Goat Anti-Rabbit IgG(H+L).



Immunohistochemistry of paraffin-embedded human kidney tissue using PACO51082 at dilution of 1:100.