

Product Information

Size:

50ug

Reactivity:

Human, Rat

Source:

Rabbit

Isotype:

IgG

Applications:

ELISA, WB, IF

Recommended dilutions:

ELISA:1:2000-1:10000, WB:1:200-1:2000,
IF:1:50-1:200

Protein Background:

Non-catalytic regulatory subunit of S-adenosylmethionine synthetase 2 (MAT2A), an enzyme that catalyzes the formation of S-adenosylmethionine from methionine and ATP. Regulates the activity of S-adenosylmethionine synthetase 2 by changing its kinetic properties, rendering the enzyme more susceptible to S-adenosylmethionine inhibition.

Gene ID:

MAT2B

Uniprot

Q9NZL9

Synonyms:

Methionine adenosyltransferase 2 subunit beta (Methionine adenosyltransferase II beta) (MAT II beta) (Putative dTDP-4-keto-6-deoxy-D-glucose 4-reductase), MAT2B, TGR

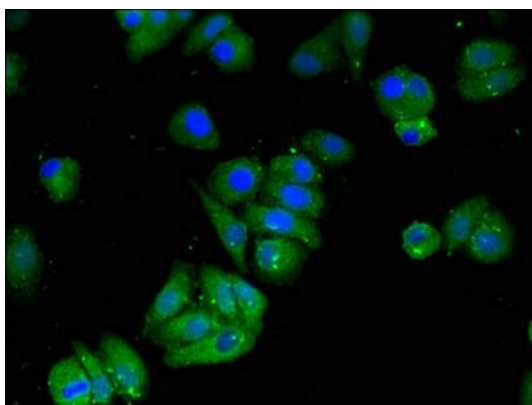
Immunogen:

Recombinant Human Methionine adenosyltransferase 2 subunit β protein (85-143AA).

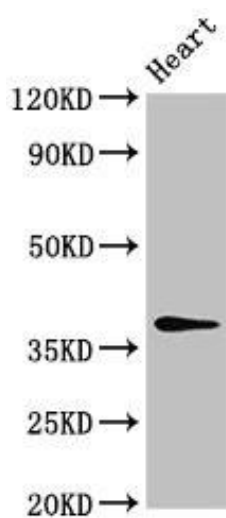
Storage:

Preservative: 0.03% Proclin 300. Constituents: 50% Glycerol, 0.01M PBS, pH 7.4

Product Images



Immunofluorescent analysis of HepG2 cells using PACO51114 at dilution of 1:100 and Alexa Fluor 488-conjugated AffiniPure Goat Anti-Rabbit IgG(H+L).



Western Blot. Positive WB detected in: Rat heart tissue. All lanes: MAT2B antibody at 4 μ g/ml. Secondary. Goat polyclonal to rabbit IgG at 1/50000 dilution. Predicted band size: 38, 37, 29, 35, 10 kDa. Observed band size: 38 kDa.