

# PKIB Antibody



PACO51122

---

## Product Information

**Size:**

50ug

**Reactivity:**

Human

**Source:**

Rabbit

**Isotype:**

IgG

**Applications:**

ELISA, IHC, IF

**Recommended dilutions:**

ELISA:1:2000-1:10000, IHC:1:20-1:200,  
IF:1:50-1:200

**Protein Background:**

Extremely potent competitive inhibitor of cAMP-dependent protein kinase activity, this protein interacts with the catalytic subunit of the enzyme after the cAMP-induced dissociation of its regulatory chains.

**Gene ID:**

PKIB

**Uniprot**

Q9C010

**Synonyms:**

cAMP-dependent protein kinase inhibitor beta (PKI-beta), PKIB, PRKACN2

**Immunogen:**

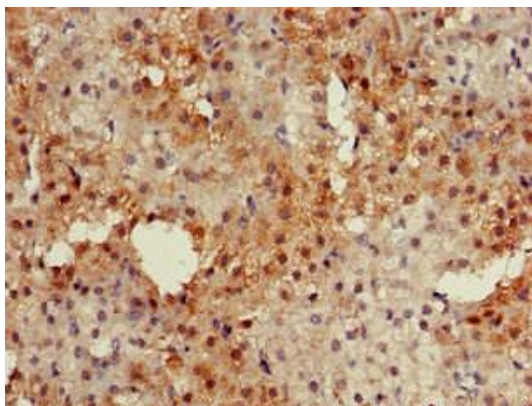
Recombinant Human cAMP-dependent protein kinase inhibitor &beta; protein (1-77AA).

**Storage:**

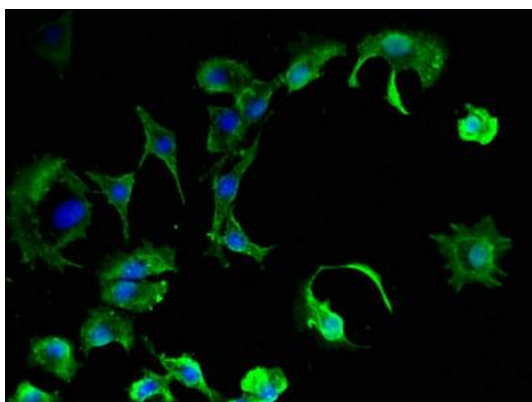
Preservative: 0.03% Proclin 300. Constituents: 50% Glycerol, 0.01M PBS, pH 7.4

## Product Images

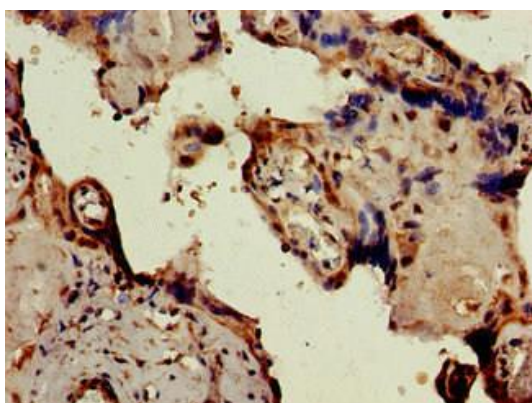
---



Immunohistochemistry of paraffin-embedded human adrenal gland tissue using PACO51122 at dilution of 1:100.



Immunofluorescent analysis of MCF-7 cells using PACO51122 at dilution of 1:100 and Alexa Fluor 488-conjugated AffiniPure Goat Anti-Rabbit IgG(H+L).



Immunohistochemistry of paraffin-embedded human placenta tissue using PACO51122 at dilution of 1:100.