

GULP1 Antibody



PACO51130

Product Information

Size:

50ug

Reactivity:

Human, Rat

Source:

Rabbit

Isotype:

IgG

Applications:

ELISA, WB, IF

Recommended dilutions:

ELISA:1:2000-1:10000, WB:1:500-1:5000,
IF:1:50-1:200

Protein Background:

May function as an adapter protein. Required for efficient phagocytosis of apoptotic cells. Modulates cellular glycosphingolipid and cholesterol transport. May play a role in the internalization and endosomal trafficking of various LRP1 ligands, such as PSAP. Increases cellular levels of GTP-bound ARF6.

Gene ID:

GULP1

Uniprot

Q9UBP9

Synonyms:

PTB domain-containing engulfment adapter protein 1 (Cell death protein 6 homolog) (PTB domain adapter protein CED-6) (Protein GULP), GULP1, CED6 GULP

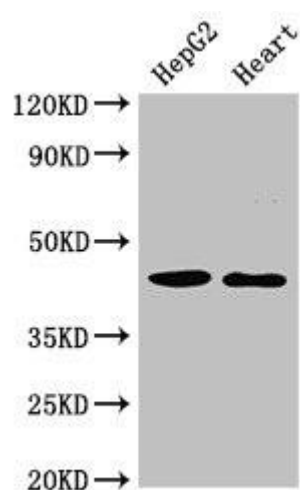
Immunogen:

Recombinant Human PTB domain-containing engulfment adapter protein 1 protein (199-279AA).

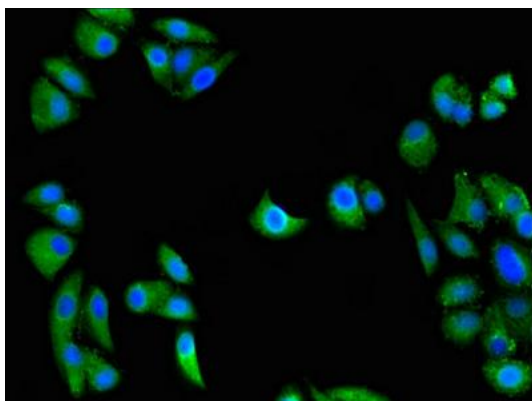
Storage:

Preservative: 0.03% Proclin 300. Constituents: 50% Glycerol, 0.01M PBS, pH 7.4

Product Images



Western Blot. Positive WB detected in: HepG2 whole cell lysate, Rat heart tissue. All lanes: GULP1 antibody at 2 μ g/ml. Secondary. Goat polyclonal to rabbit IgG at 1/50000 dilution. Predicted band size: 35, 20, 23, 34 kDa. Observed band size: 45 kDa.



Immunofluorescent analysis of HepG2 cells using PACO51130 at dilution of 1:100 and Alexa Fluor 488-conjugated AffiniPure Goat Anti-Rabbit IgG(H+L).