

# ERVW-1 Antibody



PACO51170

---

## Product Information

**Size:**

50ug

**Reactivity:**

Human

**Source:**

Rabbit

**Isotype:**

IgG

**Applications:**

ELISA, IHC, IF

**Recommended dilutions:**

ELISA:1:2000-1:10000, IHC:1:20-1:200,  
IF:1:50-1:200

**Protein Background:**

This endogenous retroviral envelope protein has retained its original fusogenic properties and participates in trophoblast fusion and the formation of a syncytium during placenta morphogenesis. May induce fusion through binding of SLC1A4 and SLC1A5.

**Gene ID:**

ERVW-1

**Uniprot**

Q9UQF0

**Synonyms:**

Syncytin-1 (Endogenous retrovirus group W member 1) (Env-W) (Envelope polyprotein gp73) (Enverin) (HERV-7q Envelope protein) (HERV-W envelope protein) (HERV-W\_7q21.2 provirus ancestral Env polyprotein) (Syncytin) [Cleaved into: Surface protein (SU) (gp50); Transmembrane protein (TM) (gp24)], ERVW-1, ERVWE1

**Immunogen:**

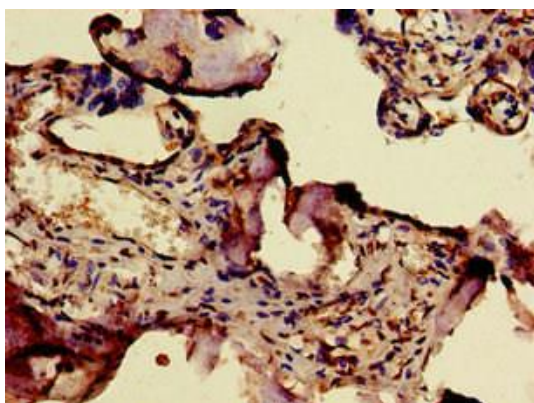
Recombinant Human Syncytin-1 protein (21-443AA).

**Storage:**

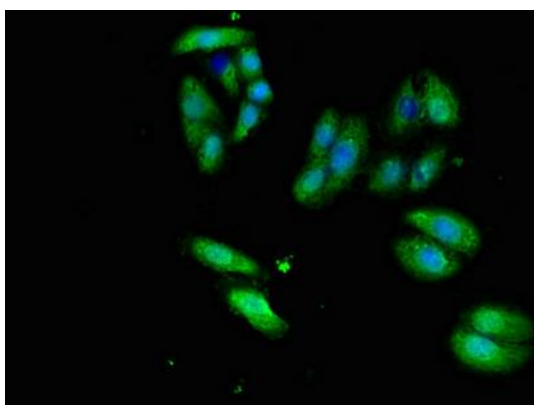
Preservative: 0.03% Proclin 300. Constituents: 50% Glycerol, 0.01M PBS, pH 7.4

## Product Images

---



Immunohistochemistry of paraffin-embedded human placenta tissue using PACO51170 at dilution of 1:100.



Immunofluorescent analysis of HepG2 cells using PACO51170 at dilution of 1:100 and Alexa Fluor 488-conjugated AffiniPure Goat Anti-Rabbit IgG(H+L).