

Product Information

Size:

50ug

Reactivity:

Human

Source:

Rabbit

Isotype:

IgG

Applications:

ELISA, IHC, IF

Recommended dilutions:

ELISA:1:2000-1:10000, IHC:1:500-1:1000,
IF:1:50-1:200

Protein Background:

Calcium-selective channel required to prevent calcium stores from overflowing, thereby playing a key role in calcium homeostasis. In response to endoplasmic reticulum overloading, assembles into a homotetramer, forming a functional calcium-selective channel, regulating the calcium content in endoplasmic reticulum store.

Gene ID:

TMCO1

Uniprot

Q9UM00

Synonyms:

Calcium load-activated calcium channel (CLAC channel) (Transmembrane and coiled-coil domain-containing protein 1) (Transmembrane and coiled-coil domains protein 4) (Xenogeneic cross-immune protein PCIA3), TMCO1, TMCC4

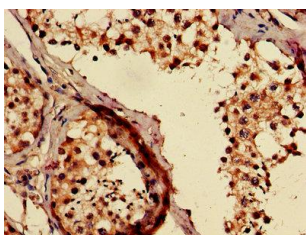
Immunogen:

Recombinant Human Calcium load-activated calcium channel protein (43-79AA).

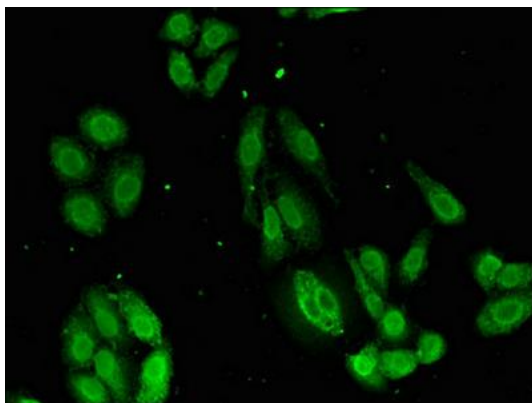
Storage:

Preservative: 0.03% Proclin 300. Constituents: 50% Glycerol, 0.01M PBS, pH 7.4

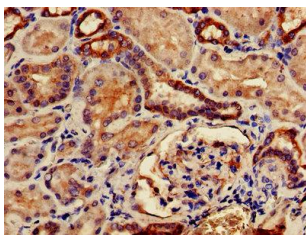
Product Images



IHC image of PACO51178 diluted at 1:500 and staining in paraffin-embedded human testis tissue performed on a Leica Bond™ system. After dewaxing and hydration, antigen retrieval was mediated by high pressure in a citrate buffer (pH 6.0). Section was blocked with 10% normal goat serum 30min at RT. Then primary antibody (1% BSA) was incubated at 4°C overnight. The primary is detected by a biotinylated secondary antibody and visualized using an HRP conjugated SP system.



Immunofluorescent analysis of HepG2 cells using PACO51178 at dilution of 1:100 and Alexa Fluor 488-conjugated AffiniPure Goat Anti-Rabbit IgG(H+L).



IHC image of PACO51178 diluted at 1:500 and staining in paraffin-embedded human kidney tissue performed on a Leica Bond™ system. After dewaxing and hydration, antigen retrieval was mediated by high pressure in a citrate buffer (pH 6.0). Section was blocked with 10% normal goat serum 30min at RT. Then primary antibody (1% BSA) was incubated at 4°C overnight. The primary is detected by a biotinylated secondary antibody and visualized using an HRP conjugated SP system.