

KLF2 Antibody



PACO51226

Product Information

Size:

50ug

Reactivity:

Human

Source:

Rabbit

Isotype:

IgG

Applications:

ELISA, IF

Recommended dilutions:

ELISA:1:2000-1:10000, IF:1:50-1:200

Protein Background:

Transcription factor that binds to the CACCC box in the promoter of target genes such as HBB/beta globin or NOV and activates their transcription.

Gene ID:

KLF2

Uniprot

Q9Y5W3

Synonyms:

Krueppel-like factor 2 (Lung krueppel-like factor), KLF2, LKLF

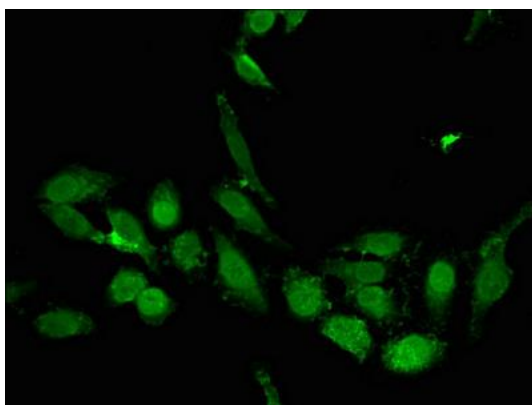
Immunogen:

Recombinant Human Krueppel-like factor 2 protein (1-355AA).

Storage:

Preservative: 0.03% Proclin 300. Constituents: 50% Glycerol, 0.01M PBS, pH 7.4

Product Images



Immunofluorescent analysis of HeLa cells using PACO51226 at dilution of 1:100 and Alexa Fluor 488-conjugated AffiniPure Goat Anti-Rabbit IgG(H+L).