

PACO51270

Product Information

Size:

50ug

Reactivity:

Human

Source:

Rabbit

Isotype:

IgG

Applications:

ELISA, WB, IHC, IF

Recommended dilutions:

ELISA:1:2000-1:10000, WB:1:200-1:5000,
IHC:1:20-1:200, IF:1:50-1:200

Protein Background:

Critical regulator of cell growth under specific conditions. Implicated in differentiation and cell cycle arrest.

Gene ID:

DRG1

Uniprot

Q9Y295

Synonyms:

Developmentally-regulated GTP-binding protein 1 (DRG-1) (Neural precursor cell expressed developmentally down-regulated protein 3) (NEDD-3), DRG1, NEDD3

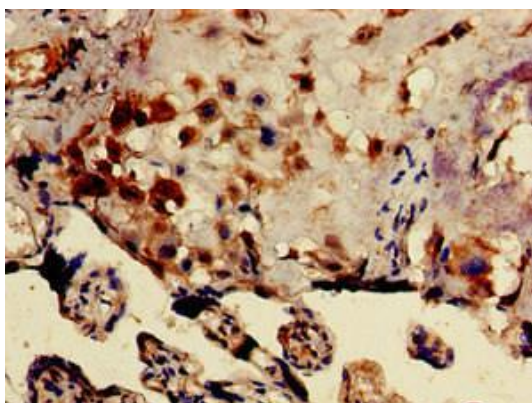
Immunogen:

Recombinant Human Developmentally-regulated GTP-binding protein 1 protein (173-228AA).

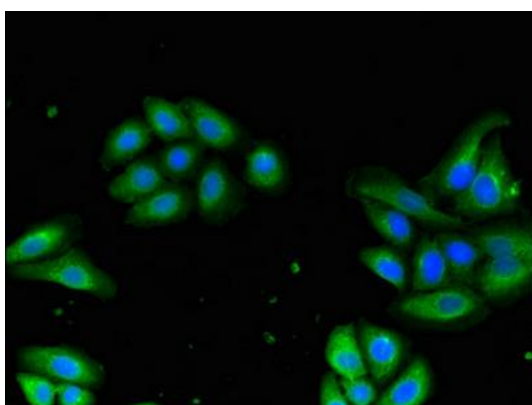
Storage:

Preservative: 0.03% Proclin 300. Constituents: 50% Glycerol, 0.01M PBS, pH 7.4

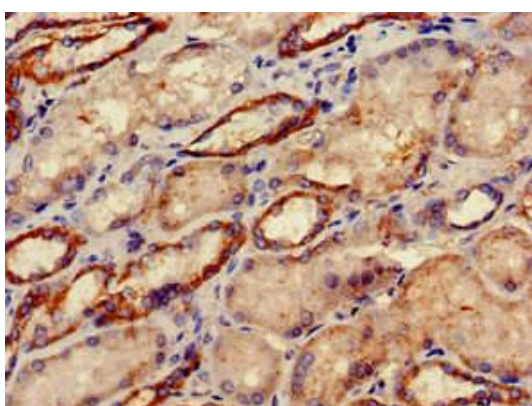
Product Images



Immunohistochemistry of paraffin-embedded human placenta tissue using PACO51270 at dilution of 1:100.



Immunofluorescent analysis of HepG2 cells using PACO51270 at dilution of 1:100 and Alexa Fluor 488-conjugated AffiniPure Goat Anti-Rabbit IgG(H+L).



Immunohistochemistry of paraffin-embedded human kidney tissue using PACO51270 at dilution of 1:100.