

# ARG1 Antibody



PACO51322

---

## Product Information

**Size:**

50ug

**Reactivity:**

Human, Mouse, Rat

**Source:**

Rabbit

**Isotype:**

IgG

**Applications:**

ELISA, WB, IHC

**Recommended dilutions:**

ELISA:1:2000-1:10000, WB:1:500-1:5000,  
IHC:1:20-1:200

**Protein Background:**

cytoplasm, cytosol, extracellular exosome, nucleus, arginase activity, arginine catabolic process, urea cycle.

**Gene ID:**

ARG1

**Uniprot**

P05089

**Synonyms:**

Arginase-1 (EC 3.5.3.1) (Liver-type arginase) (Type I arginase), ARG1

**Immunogen:**

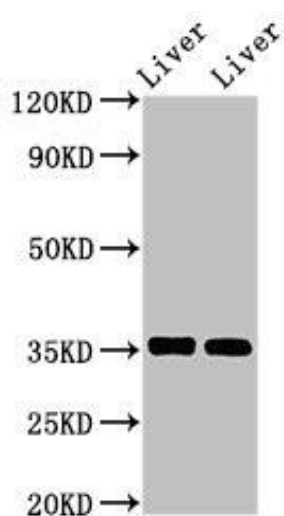
Recombinant Human Arginase-1 protein (1-322AA).

**Storage:**

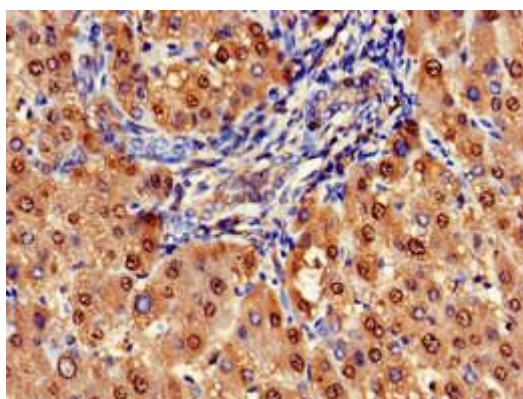
Preservative: 0.03% Proclin 300. Constituents: 50% Glycerol, 0.01M PBS, pH 7.4

## Product Images

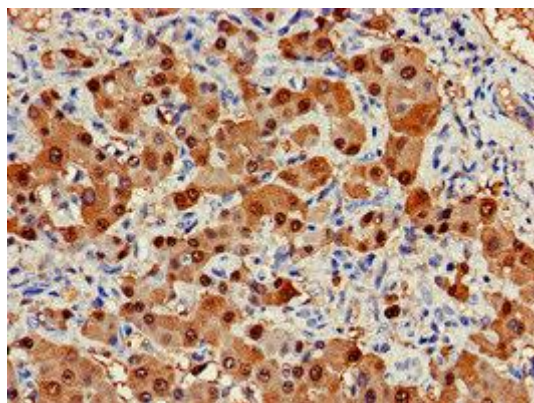
---



Western Blot. Positive WB detected in: Mouse liver tissue, Rat liver tissue. All lanes: ARG1 antibody at 2.8 $\mu$ g/ml. Secondary. Goat polyclonal to rabbit IgG at 1/50000 dilution. Predicted band size: 35, 36, 26 kDa. Observed band size: 35 kDa.



Immunohistochemistry of paraffin-embedded human liver tissue using PACO51322 at dilution of 1:100.



Immunohistochemistry of paraffin-embedded human liver cancer using PACO51322 at dilution of 1:100.