

CCR10 Antibody



PACO51394

Product Information

Size:

50ug

Reactivity:

Human

Source:

Rabbit

Isotype:

IgG

Applications:

ELISA, WB, IHC, IF

Recommended dilutions:

ELISA:1:2000-1:10000, WB:1:200-1:5000,
IHC:1:20-1:200, IF:1:50-1:200

Protein Background:

Receptor for chemokines SCYA27 and SCYA28. Subsequently transduces a signal by increasing the intracellular calcium ions level and stimulates chemotaxis in a pre-B cell line.

Gene ID:

CCR10

Uniprot

P46092

Synonyms:

C-C chemokine receptor type 10 (C-C CKR-10) (CC-CKR-10) (CCR-10) (G-protein coupled receptor 2), CCR10, GPR2

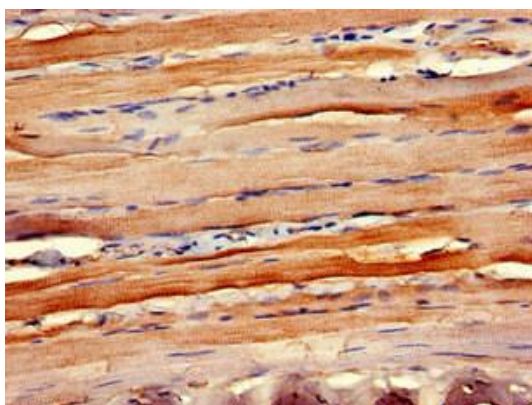
Immunogen:

Recombinant Human C-C chemokine receptor type 10 protein (314-362AA).

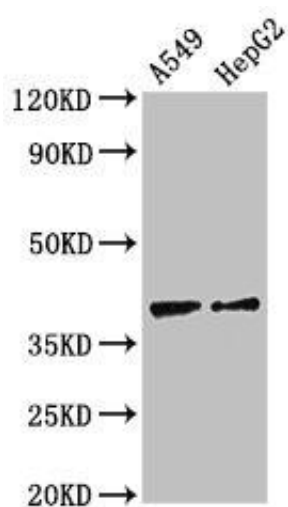
Storage:

Preservative: 0.03% Proclin 300. Constituents: 50% Glycerol, 0.01M PBS, pH 7.4

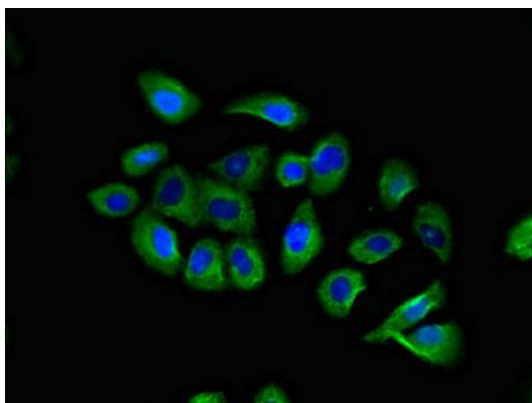
Product Images



Immunohistochemistry of paraffin-embedded human skeletal muscle tissue using PACO51394 at dilution of 1:100.



Western Blot. Positive WB detected in: A549 whole cell lysate, HepG2 whole cell lysate. All lanes: CCR10 antibody at 2.7 μ g/ml. Secondary: Goat polyclonal to rabbit IgG at 1/50000 dilution. Predicted band size: 39 kDa. Observed band size: 39 kDa.



Immunofluorescent analysis of A549 cells using PACO51394 at dilution of 1:100 and Alexa Fluor 488-conjugated AffiniPure Goat Anti-Rabbit IgG(H+L).