

CD3E Antibody



PACO51402

Product Information

Size:

50ug

Reactivity:

Human

Source:

Rabbit

Isotype:

IgG

Applications:

ELISA, IHC, IF

Recommended dilutions:

ELISA:1:2000-1:10000, IHC:1:20-1:200,
IF:1:50-1:200

Protein Background:

The CD3 complex mediates signal transduction, resulting in T-cell activation and proliferation. Required for normal immune responses.

Gene ID:

CD3E

Uniprot

P07766

Synonyms:

T-cell surface glycoprotein CD3 epsilon chain (T-cell surface antigen T3/Leu-4 epsilon chain) (CD antigen CD3e), CD3E, T3E

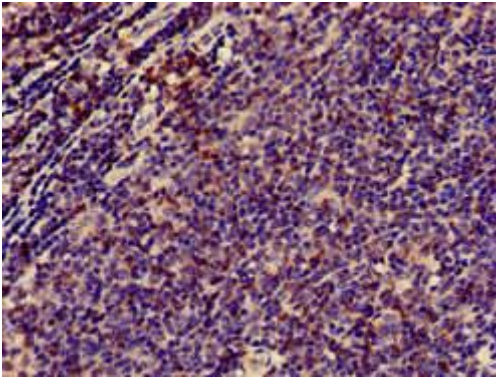
Immunogen:

Recombinant Human T-cell surface glycoprotein CD3 epsilon chain protein (23-126AA).

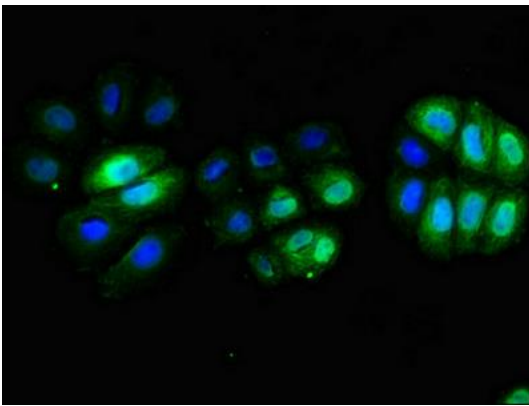
Storage:

Preservative: 0.03% Proclin 300. Constituents: 50% Glycerol, 0.01M PBS, pH 7.4

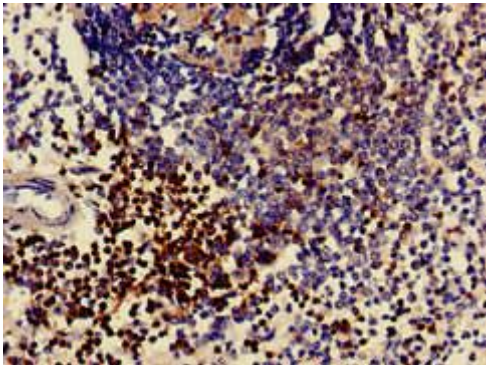
Product Images



Immunohistochemistry of paraffin-embedded human lymph node tissue using PACO51402 at dilution of 1:100.



Immunofluorescent analysis of A549 cells using PACO51402 at dilution of 1:100 and Alexa Fluor 488-conjugated AffiniPure Goat Anti-Rabbit IgG(H+L).



Immunohistochemistry of paraffin-embedded human spleen tissue using PACO51402 at dilution of 1:100.